

Collagen III alpha 1/COL3A1 Rabbit mAb

Catalog No.: A0817 **Recombinant** **33 Publications**

Basic Information

Observed MW

150 kDa

Calculated MW

139 kDa

Category

Primary antibody

Applications

WB,Auto WB,IP,ELISA

Cross-Reactivity

Human, Mouse, Rat

CloneNo number

ARC2542

Background

This gene encodes the pro-alpha1 chains of type III collagen, a fibrillar collagen that is found in extensible connective tissues such as skin, lung, uterus, intestine and the vascular system, frequently in association with type I collagen. Mutations in this gene are associated with Ehlers-Danlos syndrome type IV, and with aortic and arterial aneurysms.

Recommended Dilutions

WB 1:1000 - 1:6000

Auto WB 1:100 - 1:500

IP 0.5µg-4µg antibody for
200µg-400µg extracts of
whole cells

ELISA Recommended starting
concentration is 1 µg/mL.
Please optimize the
concentration based on
your specific assay
requirements.

Contact

☎ | 400-999-6126

✉ | cn.market@abclonal.com.cn

🌐 | www.abclonal.com.cn

Immunogen Information

Gene ID

1281

Swiss Prot

P02461

Immunogen

Recombinant protein (or fragment). This information is considered to be commercially sensitive.

Synonyms

EDS4A; EDSVASC; PMGEDSV; Collagen III alpha 1/COL3A1

Product Information

Source

Rabbit

Isotype

IgG

Purification

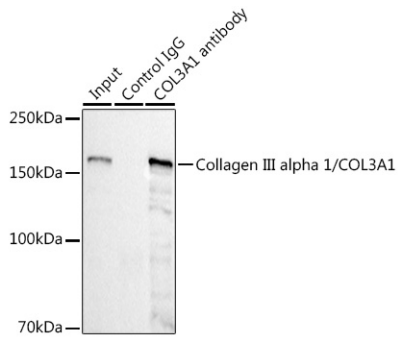
Affinity purification

Storage

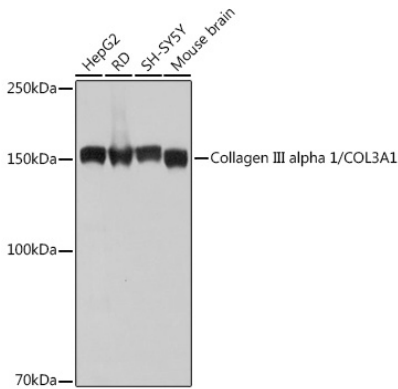
Store at -20°C. Avoid freeze / thaw cycles.

Buffer: PBS with 0.09% Sodium azide, 0.05% BSA, 50% glycerol, pH7.3.

Validation Data



Immunoprecipitation analysis of 300 µg extracts from HepG2 cells using 3 µg Collagen III alpha 1/COL3A1 Rabbit mAb (A0817). Western blot was performed from the immunoprecipitate using Collagen III alpha 1/COL3A1 Rabbit mAb (A0817) at a dilution of 1:1000.



Western blot analysis of various lysates using Collagen III alpha 1/COL3A1 Rabbit mAb (A0817) at 1:1000 dilution.

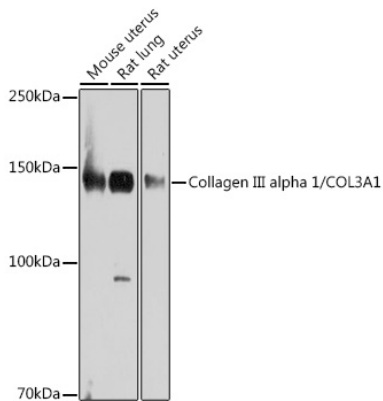
Secondary antibody: HRP-conjugated Goat anti-Rabbit IgG (H+L) (AS014) at 1:10000 dilution.

Lysates/proteins: 25µg per lane.

Blocking buffer: 3% nonfat dry milk in TBST.

Detection: ECL Basic Kit (RM00020).

Exposure time: 1s.



Western blot analysis of various lysates using Collagen III alpha 1/COL3A1 Rabbit mAb (A0817) at 1:1000 dilution.

Secondary antibody: HRP-conjugated Goat anti-Rabbit IgG (H+L) (AS014) at 1:10000 dilution.

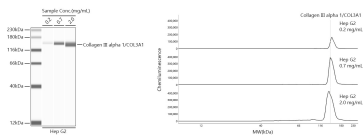
Lysates/proteins: 25µg per lane.

Blocking buffer: 3% nonfat dry milk in TBST.

Detection: ECL Basic Kit (RM00020).

Exposure time: 60s.

Validation Data



Simple Western™ analysis of lysates from Hep G2 cells using Collagen III alpha 1/COL3A1 Rabbit mAb (A0817) at 1:100 dilution. The virtual lane view (left) shows the target band (as indicated) with samples in concentrations of 0.2 mg/mL, 0.7 mg/mL and 2.0 mg/mL. The corresponding electropherogram view (right) plots chemiluminescence intensity against molecular weight along the capillary for sample concentrations of 0.2 mg/mL, 0.7 mg/mL and 2.0 mg/mL. This experiment was performed under reducing conditions on the Jess™ Simple Western instrument from ProteinSimple, a BioTechne brand, using the 12-230 kDa separation module.