

CD34 Rabbit pAb

Catalog No.: A0761 **10 Publications**

Basic Information

Observed MW

105kDa

Calculated MW

41kDa

Category

Primary antibody

Applications

ELISA, WB, IHC-P, IF/ICC

Cross-Reactivity

Human, Rat

Background

The protein encoded by this gene may play a role in the attachment of stem cells to the bone marrow extracellular matrix or to stromal cells. This single-pass membrane protein is highly glycosylated and phosphorylated by protein kinase C. Two transcript variants encoding different isoforms have been found for this gene.

Recommended Dilutions

| | |
|---------------|----------------|
| WB | 1:500 - 1:1000 |
| IHC-P | 1:50 - 1:200 |
| IF/ICC | 1:50 - 1:200 |

Immunogen Information

Gene ID

947

Swiss Prot

P28906

Immunogen

Recombinant fusion protein containing a sequence corresponding to amino acids 32-290 of human CD34 (NP_001020280.1).

Synonyms

CD34; CD34 molecule; GIG3; MORT1

Contact

| | |
|--|--|
|  | 400-999-6126 |
|  | cn.market@abclonal.com.cn |
|  | www.abclonal.com.cn |

Product Information

Source

Rabbit

Isotype

IgG

Purification

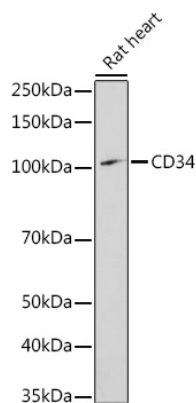
Affinity purification

Storage

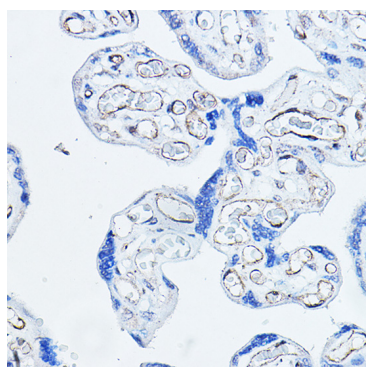
Store at -20°C. Avoid freeze / thaw cycles.

Buffer: PBS with 0.05% proclin300, 50% glycerol, pH7.3.

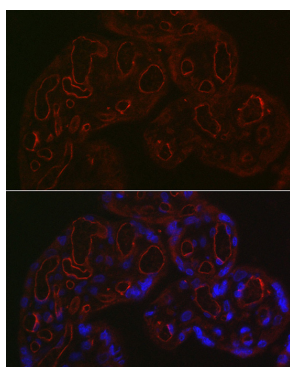
Validation Data



Western blot analysis of extracts of Rat heart, using CD34 antibody (A0761) at 1:1000 dilution.
Secondary antibody: HRP Goat Anti-Rabbit IgG (H+L) (AS014) at 1:10000 dilution.
Lysates/proteins: 25µg per lane.
Blocking buffer: 3% nonfat dry milk in TBST.
Detection: ECL Enhanced Kit (RM00021).
Exposure time: 180s.



Immunohistochemistry analysis of paraffin-embedded human placenta using CD34 Rabbit pAb (A0761) at dilution of 1:100 (40x lens). Perform high pressure antigen retrieval with 10 mM citrate buffer pH 6.0 before commencing with IHC staining protocol.



Immunofluorescence analysis of human placenta using CD34 Rabbit pAb (A0761) at dilution of 1:200 (40x lens). Blue: DAPI for nuclear staining.