

ErbB4/HER4 Rabbit pAb

Catalog No.: A0749

1 Publications

Basic Information

Observed MW

147kDa

Calculated MW

147kDa

Category

Primary antibody

Applications

ELISA, WB

Cross-Reactivity

Rat

Background

This gene is a member of the Tyr protein kinase family and the epidermal growth factor receptor subfamily. It encodes a single-pass type I membrane protein with multiple cysteine rich domains, a transmembrane domain, a tyrosine kinase domain, a phosphatidylinositol-3 kinase binding site and a PDZ domain binding motif. The protein binds to and is activated by neuregulins and other factors and induces a variety of cellular responses including mitogenesis and differentiation. Multiple proteolytic events allow for the release of a cytoplasmic fragment and an extracellular fragment. Mutations in this gene have been associated with cancer. Alternatively spliced variants which encode different protein isoforms have been described; however, not all variants have been fully characterized.

Recommended Dilutions

WB 1:500 - 1:2000

Immunogen Information

Gene ID

2066

Swiss Prot

Q15303

Immunogen

A synthetic peptide corresponding to a sequence within amino acids 1150-1250 of human ErbB4/HER4 (NP_005226.1).

Synonyms

HER4; ALS19; p180erbB4; ErbB4/HER4

Contact

☎ | 400-999-6126

✉ | cn.market@abclonal.com.cn🌐 | www.abclonal.com.cn

Product Information

Source

Rabbit

Isotype

IgG

Purification

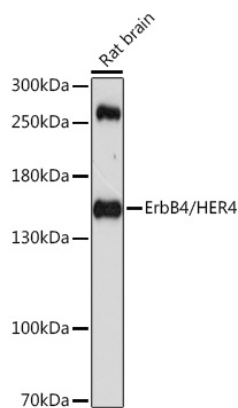
Affinity purification

Storage

Store at -20°C. Avoid freeze / thaw cycles.

Buffer: PBS with 0.01% thimerosal, 50% glycerol, pH7.3.

Validation Data



Western blot analysis of extracts of rat brain, using ErbB4/HER4 antibody (A0749) at 1:1000 dilution.
Secondary antibody: HRP Goat Anti-Rabbit IgG (H+L) (AS014) at 1:10000 dilution.
Lysates/proteins: 25µg per lane.
Blocking buffer: 3% nonfat dry milk in TBST.
Detection: ECL Basic Kit (RM00020).
Exposure time: 90s.