

# ANGPT2 Rabbit pAb

Catalog No.: A0698 **5 Publications**

## Basic Information

### Observed MW

75 kDa

### Calculated MW

57 kDa

### Category

Primary antibody

### Applications

WB,IF/ICC,ELISA

### Cross-Reactivity

Human, Mouse, Rat

## Background

This gene belongs to the angiotensin family of growth factors. The protein encoded by this gene is an antagonist of angiotensin 1, and both angiotensin 1 and angiotensin 2 are ligands for the endothelial TEK receptor tyrosine kinase. Angiotensin 2 is upregulated in multiple inflammatory diseases and is implicated in the direct control of inflammation-related signaling pathways. The encoded protein affects angiogenesis during embryogenesis and tumorigenesis, disrupts the vascular remodeling ability of angiotensin 1, and may induce endothelial cell apoptosis. This gene serves a prognostic biomarker for acute respiratory distress syndrome.

## Recommended Dilutions

**WB** 1:500 - 1:5000

**IF/ICC** 1:50 - 1:200

**ELISA** Recommended starting concentration is 1 µg/mL. Please optimize the concentration based on your specific assay requirements.

## Immunogen Information

### Gene ID

285

### Swiss Prot

O15123

### Immunogen

Recombinant protein (or fragment). This information is considered to be commercially sensitive.

### Synonyms

ANG2; AGPT2; LMPHM10; ANGPT2

## Contact

☎ | 400-999-6126

✉ | [cn.market@abclonal.com.cn](mailto:cn.market@abclonal.com.cn)

🌐 | [www.abclonal.com.cn](http://www.abclonal.com.cn)

## Product Information

### Source

Rabbit

### Isotype

IgG

### Purification

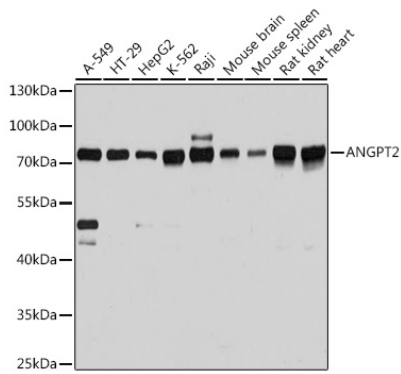
Affinity purification

### Storage

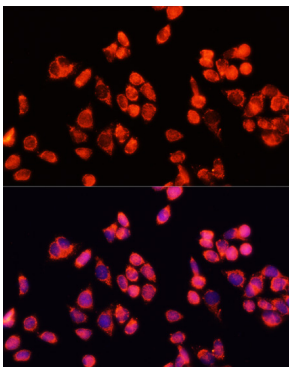
Store at -20°C. Avoid freeze / thaw cycles.

Buffer: PBS, pH 7.3, containing 50% glycerol. Preserved with Proclin300 or sodium azide. May contain 0.05% BSA as specified on the Certificate of Analysis.

## Validation Data



Western blot analysis of various lysates using ANGPT2 Rabbit pAb (A0698) at 1:3000 dilution. Secondary antibody: HRP-conjugated Goat anti-Rabbit IgG (H+L) (AS014) at 1:10000 dilution. Lysates/proteins: 25µg per lane. Blocking buffer: 3% nonfat dry milk in TBST. Detection: ECL Basic Kit (RM00020). Exposure time: 5s.



Immunofluorescence analysis of HeLa cells using ANGPT2 Rabbit pAb (A0698) at dilution of 1:100 (40x lens). Secondary antibody: Cy3-conjugated Goat anti-Rabbit IgG (H+L) (AS007) at 1:500 dilution. Blue: DAPI for nuclear staining.