

# Integrin alpha 4 (ITGA4/CD49d) Rabbit pAb

Catalog No.: A0696

1 Publications

## Basic Information

### Observed MW

70kDa/140kDa/150kDa

### Calculated MW

115kDa

### Category

Primary antibody

### Applications

WB, ELISA

### Cross-Reactivity

Human

## Background

The gene encodes a member of the integrin alpha chain family of proteins. Integrins are heterodimeric integral membrane proteins composed of an alpha chain and a beta chain that function in cell surface adhesion and signaling. The encoded preproprotein is proteolytically processed to generate light and heavy chains that comprise the alpha 4 subunit. This subunit associates with a beta 1 or beta 7 subunit to form an integrin that may play a role in cell motility and migration. This integrin is a therapeutic target for the treatment of multiple sclerosis, Crohn's disease and inflammatory bowel disease. Alternative splicing results in multiple transcript variants.

## Recommended Dilutions

**WB** 1:500 - 1:1000**ELISA** Recommended starting concentration is 1 µg/mL. Please optimize the concentration based on your specific assay requirements.

## Immunogen Information

### Gene ID

3676

### Swiss Prot

P13612

### Immunogen

Recombinant protein (or fragment). This information is considered to be commercially sensitive.

### Synonyms

IA4; CD49D; Integrin alpha 4 (ITGA4/CD49d)

## Contact

 | 400-999-6126 | [cn.market@abclonal.com.cn](mailto:cn.market@abclonal.com.cn) | [www.abclonal.com.cn](http://www.abclonal.com.cn)

## Product Information

### Source

Rabbit

### Isotype

IgG

### Purification

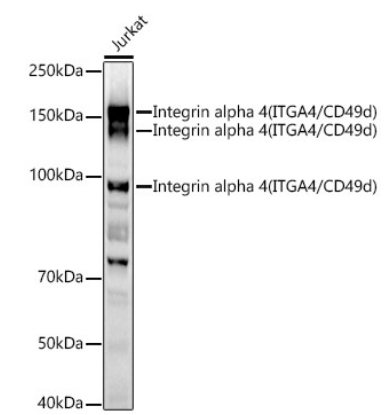
Affinity purification

### Storage

Store at -20°C. Avoid freeze / thaw cycles.

Buffer: PBS containing 50% glycerol, preserved with proclin300 or sodium azide (as specified on the Certificate of Analysis), pH 7.3.

# Validation Data



Western blot analysis of lysates from Jurkat cells, using Integrin alpha 4 (ITGA4/CD49d) Rabbit pAb (A0696) at 1:1000 dilution.  
Secondary antibody: HRP-conjugated Goat anti-Rabbit IgG (H+L) (AS014) at 1:10000 dilution.  
Lysates/proteins: 25µg per lane.  
Blocking buffer: 3% nonfat dry milk in TBST.  
Detection: ECL Basic Kit (RM00020).  
Exposure time: 180s.