

Endothelin 1 Rabbit pAb

Catalog No.: A0686

6 Publications

Basic Information

Observed MW

26kDa

Calculated MW

24kDa

Category

Primary antibody

Applications

WB,IF/ICC,IHC-P,ELISA

Cross-Reactivity

Human, Mouse, Rat

Background

This gene encodes a preproprotein that is proteolytically processed to generate a secreted peptide that belongs to the endothelin/sarafotoxin family. This peptide is a potent vasoconstrictor and its cognate receptors are therapeutic targets in the treatment of pulmonary arterial hypertension. Aberrant expression of this gene may promote tumorigenesis. Alternative splicing results in multiple transcript variants.

Recommended Dilutions

WB 1:500 - 1:1000

IF/ICC 1:50 - 1:200

IHC-P 1:500 - 1:2000

ELISA Recommended starting concentration is 1 µg/mL. Please optimize the concentration based on your specific assay requirements.

Immunogen Information

Gene ID

1906

Swiss Prot

P05305

Immunogen

Recombinant protein (or fragment). This information is considered to be commercially sensitive.

Synonyms

ET1; QME; PPET1; ARCND3; HDLCQ7; Endothelin 1

Contact

☎ | 400-999-6126

✉ | cn.market@abclonal.com.cn

🌐 | www.abclonal.com.cn

Product Information

Source

Rabbit

Isotype

IgG

Purification

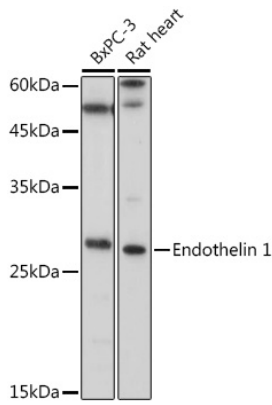
Affinity purification

Storage

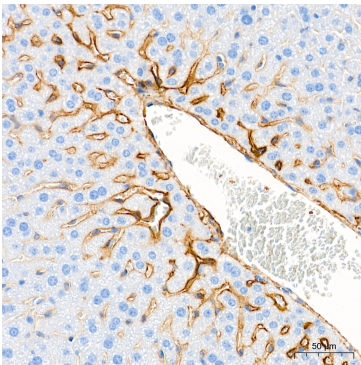
Store at -20°C. Avoid freeze / thaw cycles.

Buffer: PBS with 0.09% Sodium azide, 50% glycerol, pH7.3.

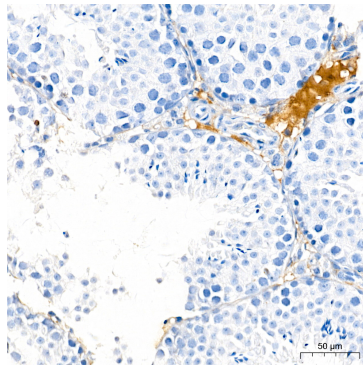
Validation Data



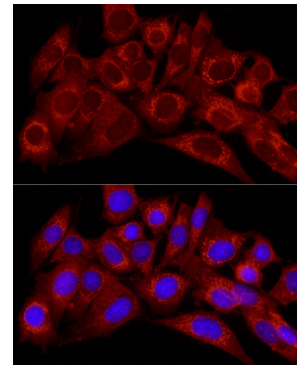
Western blot analysis of various lysates using Endothelin 1 Rabbit pAb (A0686) at 1:1000 dilution. Secondary antibody: HRP-conjugated Goat anti-Rabbit IgG (H+L) (AS014) at 1:10000 dilution. Lysates/proteins: 25µg per lane. Blocking buffer: 3% nonfat dry milk in TBST. Detection: ECL Basic Kit (RM00020). Exposure time: 1s.



Immunohistochemistry analysis of paraffin-embedded Mouse liver tissue using Endothelin 1 Rabbit pAb (A0686) at a dilution of 1:1000 (40x lens). High pressure antigen retrieval performed with 0.01M Tris-EDTA Buffer (pH 9.0) prior to IHC staining.



Immunohistochemistry analysis of paraffin-embedded Mouse testis tissue using Endothelin 1 Rabbit pAb (A0686) at a dilution of 1:1000 (40x lens). High pressure antigen retrieval performed with 0.01M Tris-EDTA Buffer (pH 9.0) prior to IHC staining.



Immunofluorescence analysis of NIH/3T3 cells using Endothelin 1 Rabbit pAb (A0686) at dilution of 1:50 (40x lens). Secondary antibody: Cy3-conjugated Goat anti-Rabbit IgG (H+L) (AS007) at 1:500 dilution. Blue: DAPI for nuclear staining.