

# ELL Rabbit pAb

Catalog No.: A0668

1 Publications

## Basic Information

### Observed MW

68kDa

### Calculated MW

68kDa

### Category

Primary antibody

### Applications

WB

### Cross-Reactivity

Human, Mouse

## Background

Enables phosphatase binding activity. Involved in positive regulation of transcription, DNA-templated and snRNA transcription. Located in cytosol; nuclear body; and transcriptionally active chromatin. Part of transcription elongation factor complex.

## Recommended Dilutions

WB 1:200 - 1:500

## Immunogen Information

### Gene ID

8178

### Swiss Prot

P55199

### Immunogen

Synthetic peptide. This information is considered to be commercially sensitive.

### Synonyms

MEN; ELL1; PPP1R68; C19orf17; ELL

## Contact

☎ | 400-999-6126

✉ | [cn.market@abclonal.com.cn](mailto:cn.market@abclonal.com.cn)

🌐 | [www.abclonal.com.cn](http://www.abclonal.com.cn)

## Product Information

### Source

Rabbit

### Isotype

IgG

### Purification

Affinity purification

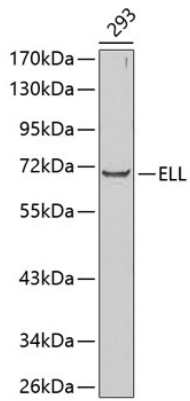
### Storage

Store at 4°C. Avoid freeze / thaw cycles.

Buffer: PBS with 0.02% sodium azide, pH7.3.

## Validation Data

---



Western blot analysis of lysates from 293 cells, using ELL Rabbit pAb (A0668).  
Secondary antibody: HRP-conjugated Goat anti-Rabbit IgG (H+L) (AS014) at 1:10000 dilution.  
Lysates/proteins: 25µg per lane.  
Blocking buffer: 3% nonfat dry milk in TBST.