

Lysozyme (LYZ) Rabbit mAb

Catalog No.: A0641 **Recombinant** **3 Publications**

Basic Information

Observed MW

15kDa

Calculated MW

17kDa

Category

Primary antibody

Applications

WB,IF-P,ELISA

Cross-Reactivity

Human, Mouse

CloneNo number

ARC0276

Background

This gene encodes human lysozyme, whose natural substrate is the bacterial cell wall peptidoglycan (cleaving the beta[1-4]glycosidic linkages between N-acetylmuramic acid and N-acetylglucosamine). Lysozyme is one of the antimicrobial agents found in human milk, and is also present in spleen, lung, kidney, white blood cells, plasma, saliva, and tears. The protein has antibacterial activity against a number of bacterial species. Missense mutations in this gene have been identified in heritable renal amyloidosis.

Recommended Dilutions

WB 1:1000 - 1:6000**IF-P** 1:200 - 1:2000**ELISA** Recommended starting concentration is 1 µg/mL. Please optimize the concentration based on your specific assay requirements.

Immunogen Information

Gene ID

4069

Swiss Prot

P61626

Immunogen

Synthetic peptide. This information is considered to be commercially sensitive.

Synonyms

LZM; LYZF1; Lysozyme (LYZ)

Contact

 | 400-999-6126 | cn.market@abclonal.com.cn | www.abclonal.com.cn

Product Information

Source

Rabbit

Isotype

IgG

Purification

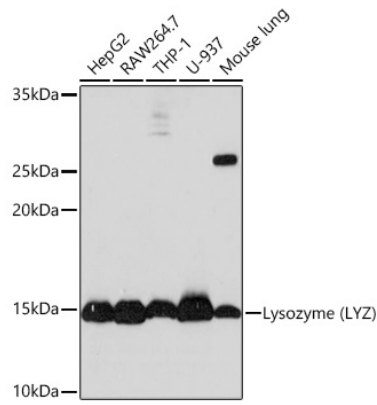
Affinity purification

Storage

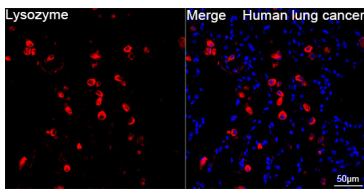
Store at -20°C. Avoid freeze / thaw cycles.

Buffer: PBS containing 50% glycerol and 0.05% BSA, preserved with proclin300 or sodium azide (as specified on the Certificate of Analysis), pH 7.3.

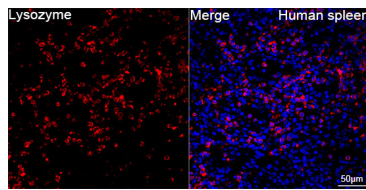
Validation Data



Western blot analysis of various lysates using Lysozyme (LYZ) Rabbit mAb (A0641) at 1:1000 dilution. Secondary antibody: HRP-conjugated Goat anti-Rabbit IgG (H+L) (AS014) at 1:10000 dilution. Lysates/proteins: 25µg per lane. Blocking buffer: 3% nonfat dry milk in TBST. Detection: ECL Basic Kit (RM00020). Exposure time: 10s.



Confocal imaging of paraffin-embedded Human lung cancer tissue using Lysozyme (LYZ) Rabbit mAb (A0641, dilution 1:200) followed by a further incubation with Cy3 Goat Anti-Rabbit IgG (H+L) (AS007, dilution 1:500) (Red). DAPI was used for nuclear staining (Blue). Objective: 40x. Perform high pressure antigen retrieval with 0.01 M citRate buffer (pH 6.0) prior to IF staining.



Confocal imaging of paraffin-embedded Human spleen tissue using Lysozyme (LYZ) Rabbit mAb (A0641, dilution 1:200) followed by a further incubation with Cy3 Goat Anti-Rabbit IgG (H+L) (AS007, dilution 1:500) (Red). DAPI was used for nuclear staining (Blue). Objective: 40x. Perform high pressure antigen retrieval with 0.01 M citRate buffer (pH 6.0) prior to IF staining.