

CRMP3/DPYSL4 Rabbit mAb

Catalog No.: A0624 **Recombinant**

Basic Information

Observed MW

60kDa

Calculated MW

62kDa

Category

Primary antibody

Applications

WB, ELISA

Cross-Reactivity

Rat

CloneNo number

ARC2530

Background

Enables filamin binding activity. Predicted to be involved in nervous system development. Predicted to be located in cytosol.

Recommended Dilutions

WB 1:1000 - 1:5000

ELISA Recommended starting concentration is 1 µg/mL. Please optimize the concentration based on your specific assay requirements.

Immunogen Information

Gene ID

10570

Swiss Prot

O14531

Immunogen

Synthetic peptide. This information is considered to be commercially sensitive.

Synonyms

CRMP3; DRP-4; ULIP4; CRMP3/DPYSL4

Contact

☎ | 400-999-6126

✉ | cn.market@abclonal.com.cn

🌐 | www.abclonal.com.cn

Product Information

Source

Rabbit

Isotype

IgG

Purification

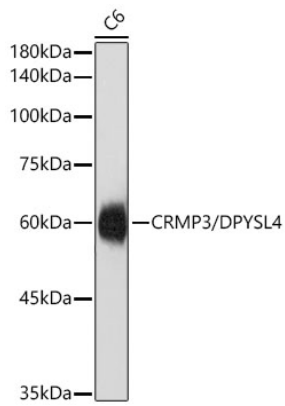
Affinity purification

Storage

Store at -20°C. Avoid freeze / thaw cycles.

Buffer: PBS containing 50% glycerol and 0.05% BSA, preserved with proclin300 or sodium azide (as specified on the Certificate of Analysis), pH 7.3.

Validation Data



Western blot analysis of lysates from C6 cells using CRMP3/DPYSL4 Rabbit mAb (A0624) at 1:5000 dilution.
Secondary antibody: HRP-conjugated Goat anti-Rabbit IgG (H+L) (AS014) at 1:10000 dilution.
Lysates/proteins: 25 µg per lane.
Blocking buffer: 3% nonfat dry milk in TBST.
Detection: ECL Basic Kit (RM00020).
Exposure time:1s.