

UPP1 Rabbit mAb

Catalog No.: A0613 **Recombinant**

Basic Information

Observed MW

30 kDa

Calculated MW

34 kDa

Category

Primary antibody

Applications

WB, ELISA

Cross-Reactivity

Human, Mouse, Rat

CloneNo number

ARC2531

Background

This gene encodes a uridine phosphorylase, an enzyme that catalyzes the reversible phosphorylation of uridine (or 2'-deoxyuridine) to uracil and ribose-1-phosphate (or deoxyribose-1-phosphate). The encoded enzyme functions in the degradation and salvage of pyrimidine ribonucleosides.

Recommended Dilutions

WB 1:500 - 1:1000

ELISA Recommended starting concentration is 1 µg/mL. Please optimize the concentration based on your specific assay requirements.

Immunogen Information

Gene ID

7378

Swiss Prot

Q16831

Immunogen

Synthetic peptide. This information is considered to be commercially sensitive.

Synonyms

UP; UPP; UPASE; UDRPASE; UPP1

Contact

☎ | 400-999-6126

✉ | cn.market@abclonal.com.cn

🌐 | www.abclonal.com.cn

Product Information

Source

Rabbit

Isotype

IgG

Purification

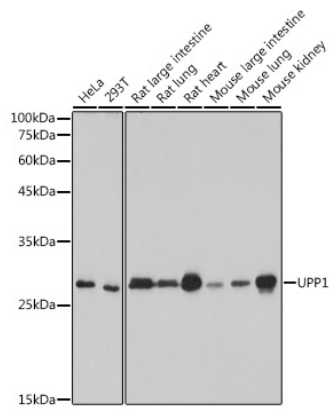
Affinity purification

Storage

Store at -20°C. Avoid freeze / thaw cycles.

Buffer: PBS containing 50% glycerol and 0.05% BSA, preserved with proclin300 or sodium azide (as specified on the Certificate of Analysis), pH 7.3.

Validation Data



Western blot analysis of various lysates using UPP1 Rabbit mAb (A0613) at 1:1000 dilution.
Secondary antibody: HRP-conjugated Goat anti-Rabbit IgG (H+L) (AS014) at 1:10000 dilution.
Lysates/proteins: 25µg per lane.
Blocking buffer: 3% nonfat dry milk in TBST.
Detection: ECL Basic Kit (RM00020).
Exposure time: 3s.