

# Olig3 Rabbit mAb

Catalog No.: A0600 **Recombinant**

## Basic Information

### Observed MW

29kDa

### Calculated MW

29kDa

### Category

Primary antibody

### Applications

WB, ELISA

### Cross-Reactivity

Human

### CloneNo number

ARC2524

## Background

Enables sequence-specific double-stranded DNA binding activity. Predicted to be involved in neuron differentiation and regulation of transcription by RNA polymerase II. Predicted to act upstream of or within negative regulation of transcription by RNA polymerase II; spinal cord motor neuron cell fate specification; and spinal cord motor neuron migration. Predicted to be part of chromatin. Predicted to be active in nucleus.

## Recommended Dilutions

**WB** 1:1000 - 1:6000

**ELISA** Recommended starting concentration is 1 µg/mL. Please optimize the concentration based on your specific assay requirements.

## Immunogen Information

### Gene ID

167826

### Swiss Prot

Q7RTU3

### Immunogen

Synthetic peptide. This information is considered to be commercially sensitive.

### Synonyms

Bhlhb7; bHLHe20; Olig3

## Contact

☎ | 400-999-6126

✉ | [cn.market@abclonal.com.cn](mailto:cn.market@abclonal.com.cn)

🌐 | [www.abclonal.com.cn](http://www.abclonal.com.cn)

## Product Information

### Source

Rabbit

### Isotype

IgG

### Purification

Affinity purification

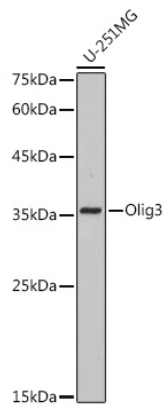
### Storage

Store at -20°C. Avoid freeze / thaw cycles.

Buffer: PBS containing 50% glycerol and 0.05% BSA, preserved with proclin300 or sodium azide (as specified on the Certificate of Analysis), pH 7.3.

## Validation Data

---



Western blot analysis of lysates from U-251 MG cells, using Olig3 Rabbit mAb (A0600) at 1:1000 dilution.  
Secondary antibody: HRP-conjugated Goat anti-Rabbit IgG (H+L) (AS014) at 1:10000 dilution.  
Lysates/proteins: 25µg per lane.  
Blocking buffer: 3% nonfat dry milk in TBST.  
Detection: ECL Basic Kit (RM00020).  
Exposure time: 10s.