

PEBP1 Rabbit pAb

Catalog No.: A0578

1 Publications

Basic Information

Observed MW

21kDa

Calculated MW

21kDa

Category

Primary antibody

Applications

WB, IF/ICC, IP, ELISA

Cross-Reactivity

Human, Mouse, Rat

Background

This gene encodes a member of the phosphatidylethanolamine-binding family of proteins and has been shown to modulate multiple signaling pathways, including the MAP kinase (MAPK), NF-kappa B, and glycogen synthase kinase-3 (GSK-3) signaling pathways. The encoded protein can be further processed to form a smaller cleavage product, hippocampal cholinergic neurostimulating peptide (HCNP), which may be involved in neural development. This gene has been implicated in numerous human cancers and may act as a metastasis suppressor gene. Multiple pseudogenes of this gene have been identified in the genome.

Recommended Dilutions

WB 1:500 - 1:1000**IF/ICC** 1:50 - 1:200**IP** 0.5µg-4µg antibody for
200µg-400µg extracts of
whole cells**ELISA** Recommended starting
concentration is 1 µg/mL.
Please optimize the
concentration based on
your specific assay
requirements.

Contact

 | 400-999-6126 | cn.market@abclonal.com.cn | www.abclonal.com.cn

Immunogen Information

Gene ID

5037

Swiss Prot

P30086

Immunogen

Recombinant protein (or fragment). This information is considered to be commercially sensitive.

Synonyms

PBP; HCNP; PEBP; RKIP; HCNPPp; PEBP-1; HEL-210; HEL-S-34; HEL-S-96; PEBP1

Product Information

Source

Rabbit

Isotype

IgG

Purification

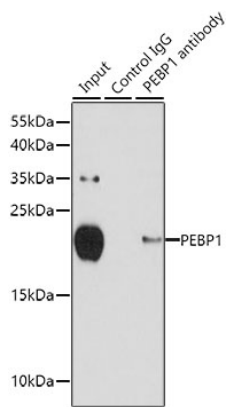
Affinity purification

Storage

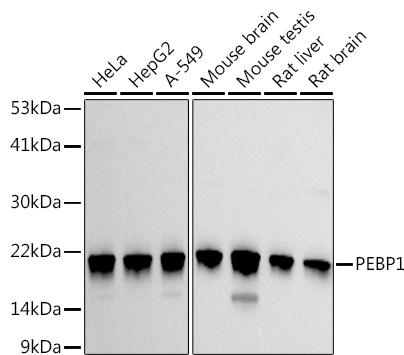
Store at -20°C. Avoid freeze / thaw cycles.

Buffer: PBS containing 50% glycerol, preserved with proclin300 or sodium azide (as specified on the Certificate of Analysis), pH 7.3.

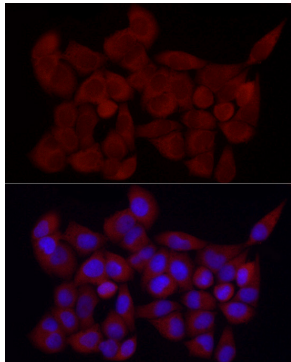
Validation Data



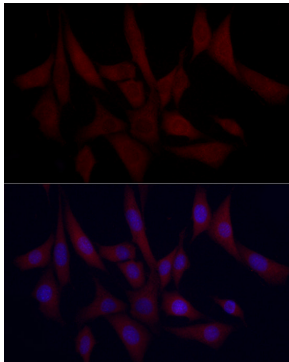
Immunoprecipitation analysis of 150 µg extracts of MCF-7 cells using 3 µg PEBP1 antibody (A0578). Western blot was performed from the immunoprecipitate using PEBP1 antibody (A0578) at a dilution of 1:500.



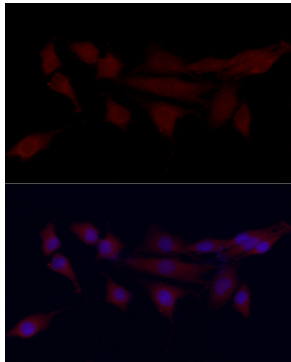
Western blot analysis of various lysates using PEBP1 Rabbit pAb (A0578) at 1:1000 dilution. Secondary antibody: HRP-conjugated Goat anti-Rabbit IgG (H+L) (AS014) at 1:10000 dilution. Lysates/proteins: 25µg per lane. Blocking buffer: 3% nonfat dry milk in TBST. Detection: ECL Basic Kit (RM00020). Exposure time: 30s.



Immunofluorescence analysis of HeLa cells using PEBP1 Rabbit pAb (A0578) at dilution of 1:25 (40x lens). Secondary antibody: Cy3-conjugated Goat anti-Rabbit IgG (H+L) (AS007) at 1:500 dilution. Blue: DAPI for nuclear staining.



Immunofluorescence analysis of NIH/3T3 cells using PEBP1 Rabbit pAb (A0578) at dilution of 1:25 (40x lens). Secondary antibody: Cy3-conjugated Goat anti-Rabbit IgG (H+L) (AS007) at 1:500 dilution. Blue: DAPI for nuclear staining.



Immunofluorescence analysis of PC-12 cells using PEBP1 Rabbit pAb (A0578) at dilution of 1:25 (40x lens). Secondary antibody: Cy3-conjugated Goat anti-Rabbit IgG (H+L) (AS007) at 1:500 dilution. Blue: DAPI for nuclear staining.