

HSP60/HSPD1 Rabbit mAb

Catalog No.: A0564 **Recombinant** **12 Publications**

Basic Information

Observed MW

60 kDa

Calculated MW

61 kDa

Category

Primary antibody

Applications

WB,IP,IF/ICC,IHC-P,ELISA

Cross-Reactivity

Human, Mouse, Rat, Wheat

CloneNo number

ARC0260

Background

This gene encodes a member of the chaperonin family. The encoded mitochondrial protein may function as a signaling molecule in the innate immune system. This protein is essential for the folding and assembly of newly imported proteins in the mitochondria. This gene is adjacent to a related family member and the region between the 2 genes functions as a bidirectional promoter. Several pseudogenes have been associated with this gene. Two transcript variants encoding the same protein have been identified for this gene. Mutations associated with this gene cause autosomal recessive spastic paraplegia 13.

Recommended Dilutions

WB 1:20000 - 1:150000

IP 0.5 µg-4 µg antibody for
200 µg-400 µg extracts
of whole cells

IF/ICC 1:100 - 1:1000

IHC-P 1:2000 - 1:8000

ELISA Recommended starting
concentration is 1 µg/mL.
Please optimize the
concentration based on
your specific assay
requirements.

Immunogen Information

Gene ID

3329

Swiss Prot

P10809

Immunogen

A synthetic peptide corresponding to a sequence within amino acids 350-450 of human HSP60/HSPD1 (P10809).

Synonyms

HLD4; CPN60; GROEL; HSP60; HSP65; SPG13; HSP-60; HuCHA60; HSP60/HSPD1

Product Information

Source

Rabbit

Isotype

IgG

Purification

Affinity purification

Storage

Store at -20°C. Avoid freeze / thaw cycles.

Buffer: PBS containing 50% glycerol and 0.05% BSA, preserved with proclin300 or sodium azide (as specified on the Certificate of Analysis), pH 7.3.

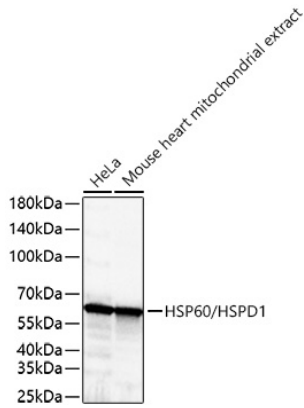
Contact

 | 400-999-6126

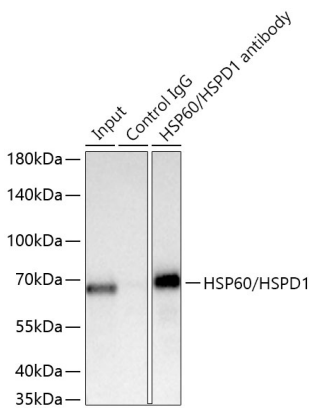
 | cn.market@abclonal.com.cn

 | www.abclonal.com.cn

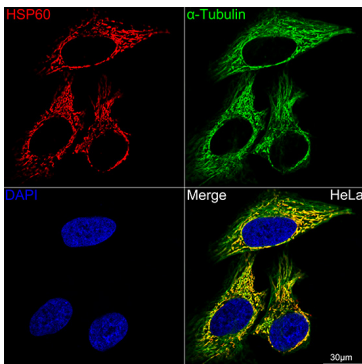
Validation Data



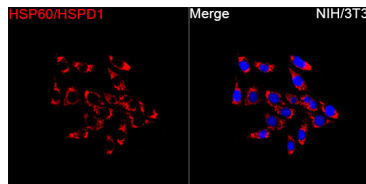
Western blot analysis of various lysates using HSP60/HSPD1 Rabbit mAb (A0564) at 1:40000 dilution incubated overnight at 4°C.
 Secondary antibody: HRP-conjugated Goat anti-Rabbit IgG (H+L) (AS014) at 1:10000 dilution.
 Lysates/proteins: 25 µg per lane.
 Blocking buffer: 3% nonfat dry milk in TBST.
 Detection: ECL Basic Kit (RM00020).
 Exposure time: 1 s.



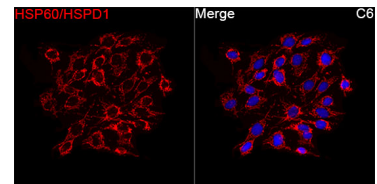
Immunoprecipitation of HSP60/HSPD1 from 300 µg extracts of HeLa cells was performed using 2 µg of HSP60/HSPD1 Rabbit mAb (A0564). Rabbit Control IgG (AC005) was used to precipitate the Control IgG sample. IP samples were eluted with 1x Laemmli Buffer. The Input lane represents 10% of the total input. Western blot analysis of immunoprecipitates was conducted using HSP60/HSPD1 Rabbit mAb (A0564) at a dilution of 1:6000.



Confocal imaging of HeLa cells using HSP60/HSPD1 Rabbit mAb (A0564, dilution 1:100) (Red). The cells were counterstained with α -Tubulin Rabbit mAb (AC049, dilution 1:100) (Green). DAPI was used for nuclear staining (blue). Objective: 60x.

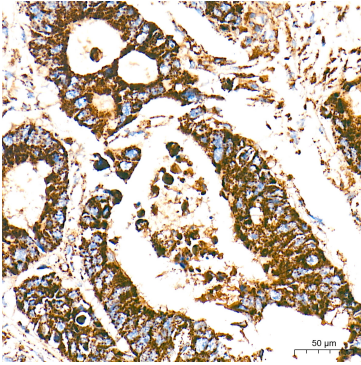


Immunofluorescence analysis of NIH/3T3 cells using HSP60/HSPD1 Rabbit mAb (A0564) at a dilution of 1:100 (40x lens). Secondary antibody: Cy3-conjugated Goat anti-Rabbit IgG (H+L)(AS007) at 1:500 dilution. Blue: DAPI for nuclear staining.

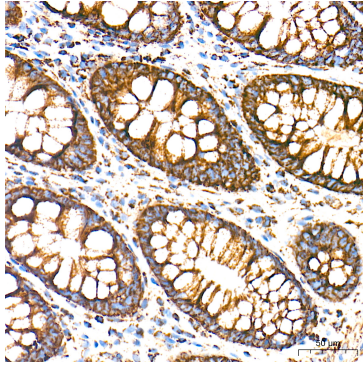


Immunofluorescence analysis of C6 cells using HSP60/HSPD1 Rabbit mAb (A0564) at a dilution of 1:100 (40x lens). Secondary antibody: Cy3-conjugated Goat anti-Rabbit IgG (H+L)(AS007) at 1:500 dilution. Blue: DAPI for nuclear staining.

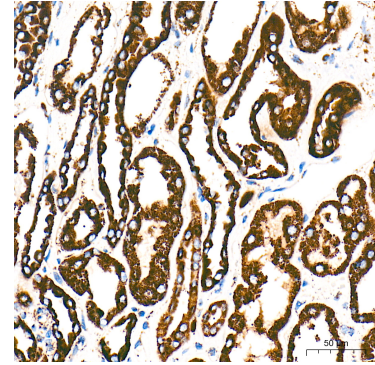
Validation Data



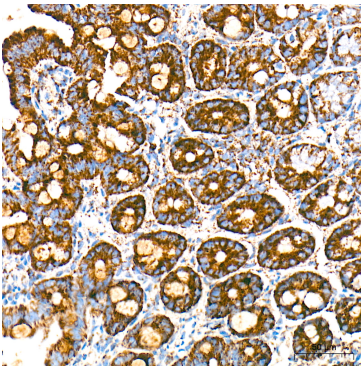
Immunohistochemistry analysis of paraffin-embedded Human colon carcinoma tissue using HSP60/HSPD1 Rabbit mAb (A0564) at a dilution of 1:2000 (40x lens). High pressure antigen retrieval performed with 0.01M Tris-EDTA Buffer (pH 9.0) prior to IHC staining.



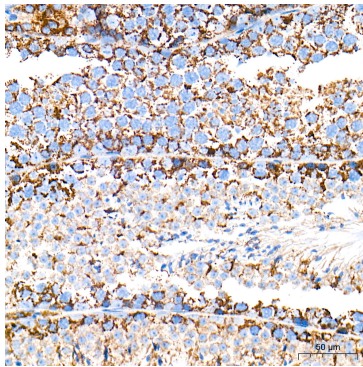
Immunohistochemistry analysis of paraffin-embedded Human colon tissue using HSP60/HSPD1 Rabbit mAb (A0564) at a dilution of 1:2000 (40x lens). High pressure antigen retrieval performed with 0.01M Tris-EDTA Buffer (pH 9.0) prior to IHC staining.



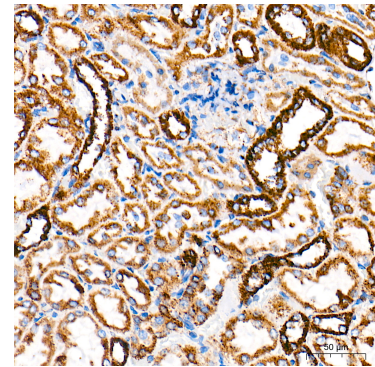
Immunohistochemistry analysis of paraffin-embedded Human kidney tissue using HSP60/HSPD1 Rabbit mAb (A0564) at a dilution of 1:2000 (40x lens). High pressure antigen retrieval performed with 0.01M Tris-EDTA Buffer (pH 9.0) prior to IHC staining.



Immunohistochemistry analysis of paraffin-embedded Mouse intestine tissue using HSP60/HSPD1 Rabbit mAb (A0564) at a dilution of 1:2000 (40x lens). High pressure antigen retrieval performed with 0.01M Tris-EDTA Buffer (pH 9.0) prior to IHC staining.



Immunohistochemistry analysis of paraffin-embedded Mouse testis tissue using HSP60/HSPD1 Rabbit mAb (A0564) at a dilution of 1:2000 (40x lens). High pressure antigen retrieval performed with 0.01M Tris-EDTA Buffer (pH 9.0) prior to IHC staining.



Immunohistochemistry analysis of paraffin-embedded Rat kidney tissue using HSP60/HSPD1 Rabbit mAb (A0564) at a dilution of 1:2000 (40x lens). High pressure antigen retrieval performed with 0.01M Tris-EDTA Buffer (pH 9.0) prior to IHC staining.