

# GTF2F2 Rabbit mAb

Catalog No.: A0536 **Recombinant**

## Basic Information

### Observed MW

30kDa

### Calculated MW

28kDa

### Category

Primary antibody

### Applications

WB,IHC-P,ELISA

### Cross-Reactivity

Human, Mouse, Rat

### CloneNo number

ARC2513

## Background

Predicted to enable RNA polymerase II general transcription initiation factor activity. Involved in transcription by RNA polymerase II. Located in microtubule cytoskeleton and nucleoplasm. Part of transcription preinitiation complex.

## Recommended Dilutions

**WB** 1:1000 - 1:6000

**IHC-P** 1:200 - 1:800

**ELISA** Recommended starting concentration is 1 µg/mL. Please optimize the concentration based on your specific assay requirements.

## Immunogen Information

### Gene ID

2963

### Swiss Prot

P13984

### Immunogen

Synthetic peptide. This information is considered to be commercially sensitive.

### Synonyms

BTF4; RAP30; TF2F2; TFIIF; GTF2F2

## Contact

☎ | 400-999-6126

✉ | [cn.market@abclonal.com.cn](mailto:cn.market@abclonal.com.cn)

🌐 | [www.abclonal.com.cn](http://www.abclonal.com.cn)

## Product Information

### Source

Rabbit

### Isotype

IgG

### Purification

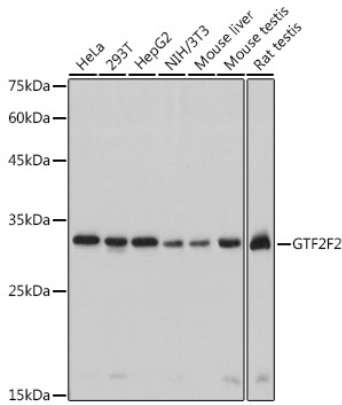
Affinity purification

### Storage

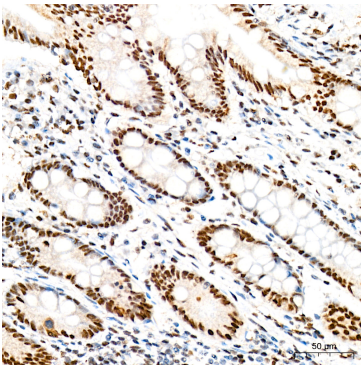
Store at -20°C. Avoid freeze / thaw cycles.

Buffer: PBS containing 50% glycerol and 0.05% BSA, preserved with proclin300 or sodium azide (as specified on the Certificate of Analysis), pH 7.3.

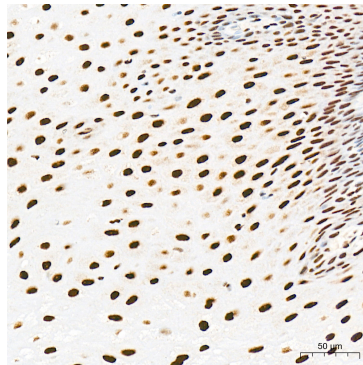
## Validation Data



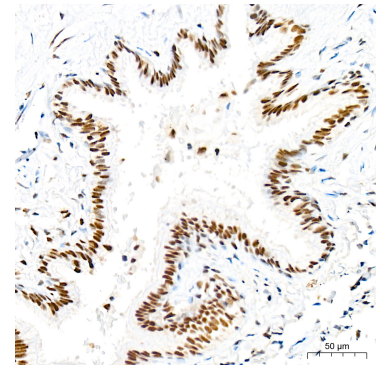
Western blot analysis of various lysates using GTF2F2 Rabbit mAb (A0536) at 1:1000 dilution. Secondary antibody: HRP-conjugated Goat anti-Rabbit IgG (H+L) (AS014) at 1:10000 dilution. Lysates/proteins: 25µg per lane. Blocking buffer: 3% nonfat dry milk in TBST. Detection: ECL Basic Kit (RM00020). Exposure time: 1s.



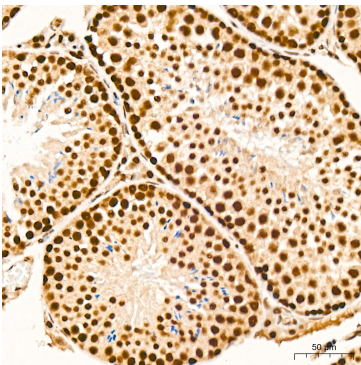
Immunohistochemistry analysis of paraffin-embedded Human colon tissue using GTF2F2 Rabbit mAb (A0536) at a dilution of 1:200 (40x lens). High pressure antigen retrieval was performed with 0.01 M citrate buffer (pH 6.0) prior to IHC staining.



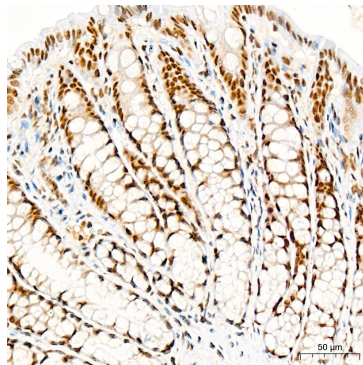
Immunohistochemistry analysis of paraffin-embedded Human esophagus tissue using GTF2F2 Rabbit mAb (A0536) at a dilution of 1:200 (40x lens). High pressure antigen retrieval was performed with 0.01 M citrate buffer (pH 6.0) prior to IHC staining.



Immunohistochemistry analysis of paraffin-embedded Human lung tissue using GTF2F2 Rabbit mAb (A0536) at a dilution of 1:200 (40x lens). High pressure antigen retrieval was performed with 0.01 M citrate buffer (pH 6.0) prior to IHC staining.



Immunohistochemistry analysis of paraffin-embedded Mouse testis tissue using GTF2F2 Rabbit mAb (A0536) at a dilution of 1:200 (40x lens). High pressure antigen retrieval was performed with 0.01 M citrate buffer (pH 6.0) prior to IHC staining.



Immunohistochemistry analysis of paraffin-embedded Rat colon tissue using GTF2F2 Rabbit mAb (A0536) at a dilution of 1:200 (40x lens). High pressure antigen retrieval was performed with 0.01 M citrate buffer (pH 6.0) prior to IHC staining.