

UBE2B Rabbit mAb

Catalog No.: A0503 **Recombinant**

Basic Information

Observed MW

17kDa

Calculated MW

17kDa

Category

Primary antibody

Applications

ELISA, WB, IHC-P

Cross-Reactivity

Human, Mouse, Rat

CloneNo number

ARC2512

Background

The modification of proteins with ubiquitin is an important cellular mechanism for targeting abnormal or short-lived proteins for degradation. Ubiquitination involves at least three classes of enzymes: ubiquitin-activating enzymes, or E1s, ubiquitin-conjugating enzymes, or E2s, and ubiquitin-protein ligases, or E3s. This gene encodes a member of the E2 ubiquitin-conjugating enzyme family. This enzyme is required for post-replicative DNA damage repair. Its protein sequence is 100% identical to the mouse, rat, and rabbit homologs, which indicates that this enzyme is highly conserved in eukaryotic evolution.

Recommended Dilutions

WB 1:500 - 1:1000**IHC-P** 1:500 - 1:1000

Immunogen Information

Gene ID

7320

Swiss Prot

P63146

Immunogen

A synthetic peptide corresponding to a sequence within amino acids 53-152 of human UBE2B (P63146).

Synonyms

HR6B; UBC2; HHR6B; RAD6B; E2-17kDa; UBE2B

Contact

 | 400-999-6126 | cn.market@abclonal.com.cn | www.abclonal.com.cn

Product Information

Source

Rabbit

Isotype

IgG

Purification

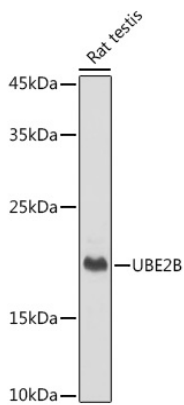
Affinity purification

Storage

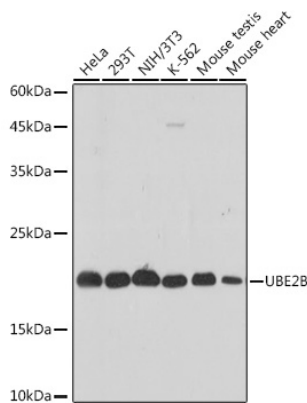
Store at -20°C. Avoid freeze / thaw cycles.

Buffer: PBS with 0.02% sodium azide, 0.05% BSA, 50% glycerol, pH 7.3.

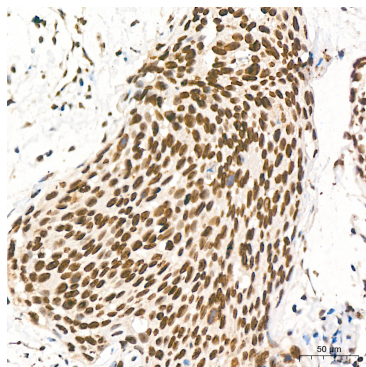
Validation Data



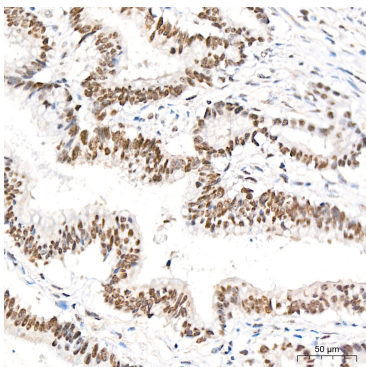
Western blot analysis of extracts of Rat testis, using UBE2B antibody (A0503) at 1:1000 dilution.
Secondary antibody: HRP Goat Anti-Rabbit IgG (H+L) (AS014) at 1:10000 dilution.
Lysates/proteins: 25µg per lane.
Blocking buffer: 3% nonfat dry milk in TBST.
Detection: ECL Basic Kit (RM00020).
Exposure time: 1s.



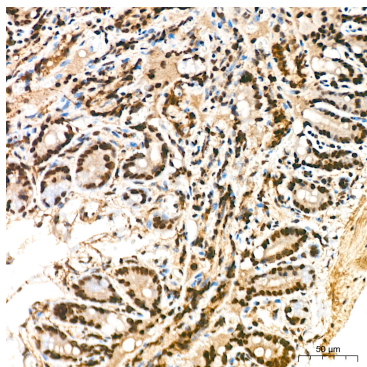
Western blot analysis of extracts of various cell lines, using UBE2B antibody (A0503) at 1:1000 dilution.
Secondary antibody: HRP Goat Anti-Rabbit IgG (H+L) (AS014) at 1:10000 dilution.
Lysates/proteins: 25µg per lane.
Blocking buffer: 3% nonfat dry milk in TBST.
Detection: ECL Basic Kit (RM00020).
Exposure time: 3s.



Immunohistochemistry analysis of UBE2B in paraffin-embedded human cervix cancer tissue using UBE2B Rabbit mAb (A0503) at a dilution of 1:800 (40x lens).High pressure antigen retrieval was performed with 0.01 M citrate buffer (pH 6.0) prior to IHC staining.

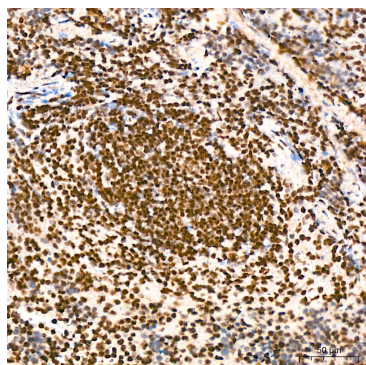


Immunohistochemistry analysis of UBE2B in paraffin-embedded human colon carcinoma tissue using UBE2B Rabbit mAb (A0503) at a dilution of 1:800 (40x lens).High pressure antigen retrieval was performed with 0.01 M citrate buffer (pH 6.0) prior to IHC staining.

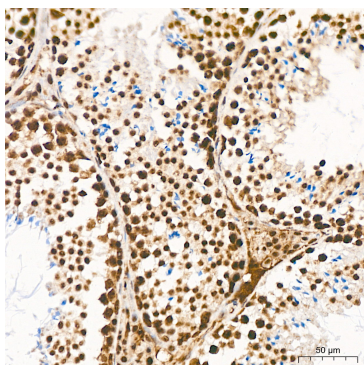


Immunohistochemistry analysis of UBE2B in paraffin-embedded mouse colon tissue using UBE2B Rabbit mAb (A0503) at a dilution of 1:800 (40x lens).High pressure antigen retrieval was performed with 0.01 M citrate buffer (pH 6.0) prior to IHC staining.

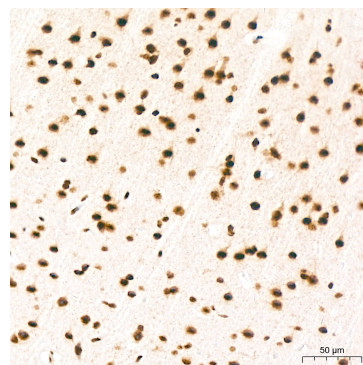
Validation Data



Immunohistochemistry analysis of UBE2B in paraffin-embedded mouse spleen tissue using UBE2B Rabbit mAb (A0503) at a dilution of 1:800 (40x lens). High pressure antigen retrieval was performed with 0.01 M citrate buffer (pH 6.0) prior to IHC staining.



Immunohistochemistry analysis of UBE2B in paraffin-embedded mouse testis tissue using UBE2B Rabbit mAb (A0503) at a dilution of 1:800 (40x lens). High pressure antigen retrieval was performed with 0.01 M citrate buffer (pH 6.0) prior to IHC staining.



Immunohistochemistry analysis of UBE2B in paraffin-embedded rat brain tissue using UBE2B Rabbit mAb (A0503) at a dilution of 1:800 (40x lens). High pressure antigen retrieval was performed with 0.01 M citrate buffer (pH 6.0) prior to IHC staining.