

# EXOSC7 Rabbit mAb

Catalog No.: A0501 **Recombinant**

## Basic Information

### Observed MW

37kDa

### Calculated MW

32kDa

### Category

Primary antibody

### Applications

WB, ELISA

### Cross-Reactivity

Human, Mouse

### CloneNo number

ARC2510

## Background

Predicted to enable 3'-5'-exoribonuclease activity and RNA binding activity. Predicted to be involved in RNA metabolic process. Part of exosome (RNase complex).

## Recommended Dilutions

**WB** 1:500 - 1:1000

**ELISA** Recommended starting concentration is 1 µg/mL. Please optimize the concentration based on your specific assay requirements.

## Immunogen Information

### Gene ID

23016

### Swiss Prot

Q15024

### Immunogen

Synthetic peptide. This information is considered to be commercially sensitive.

### Synonyms

p8; EAP1; RRP42; Rrp42p; hRrp42p; EXOSC7

## Contact

☎ | 400-999-6126

✉ | [cn.market@abclonal.com.cn](mailto:cn.market@abclonal.com.cn)

🌐 | [www.abclonal.com.cn](http://www.abclonal.com.cn)

## Product Information

### Source

Rabbit

### Isotype

IgG

### Purification

Affinity purification

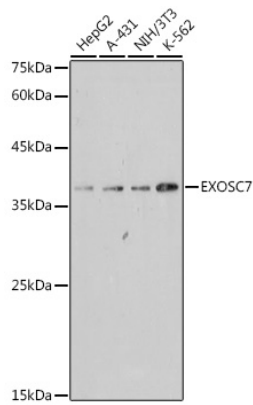
### Storage

Store at -20°C. Avoid freeze / thaw cycles.

Buffer: PBS containing 50% glycerol and 0.05% BSA, preserved with proclin300 or sodium azide (as specified on the Certificate of Analysis), pH 7.3.

## Validation Data

---



Western blot analysis of various lysates using EXOSC7 Rabbit mAb (A0501) at 1:1000 dilution incubated overnight at 4°C.

Secondary antibody: HRP-conjugated Goat anti-Rabbit IgG (H+L) (AS014) at 1:10000 dilution.

Lysates/proteins: 25 µg per lane.

Blocking buffer: 3% nonfat dry milk in TBST.

Detection: ECL Basic Kit (RM00020).

Exposure time: 180 s.