

VCAM1 Rabbit pAb

Catalog No.: A0279SP **28 Publications**

Basic Information

Observed MW

95-120 kDa

Calculated MW

71 kDa/74 kDa/81 kDa

Category

Primary antibody

Applications

WB,IF-P,ELISA

Cross-Reactivity

Human, Mouse, Rat

Background

This gene is a member of the Ig superfamily and encodes a cell surface sialoglycoprotein expressed by cytokine-activated endothelium. This type I membrane protein mediates leukocyte-endothelial cell adhesion and signal transduction, and may play a role in the development of atherosclerosis and rheumatoid arthritis. Three alternatively spliced transcripts encoding different isoforms have been described for this gene.

Recommended Dilutions

WB 1:1000 - 1:5000

IF-P 1:100 - 1:800

ELISA Recommended starting concentration is 1 µg/mL. Please optimize the concentration based on your specific assay requirements. For high-ratio antibody dilutions ($\geq 1:10000$) a sequential dilution method is strongly recommended to ensure measurement accuracy.

Immunogen Information

Gene ID

7412

Swiss Prot

P19320

Immunogen

This information is considered to be commercially sensitive.

Synonyms

CD106; INCAM-100; VCAM1

Product Information

Source

Rabbit

Isotype

IgG

Purification

Affinity purification

Storage

Store at -20°C. Avoid freeze / thaw cycles.

Buffer: PBS, pH 7.3, containing 50% glycerol. Preserved with Proclin300 or sodium azide.

May contain 0.05% BSA as specified on the Certificate of Analysis.

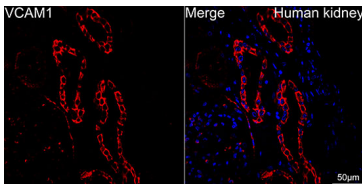
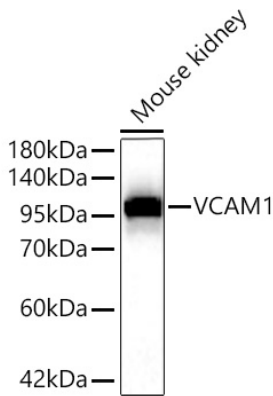
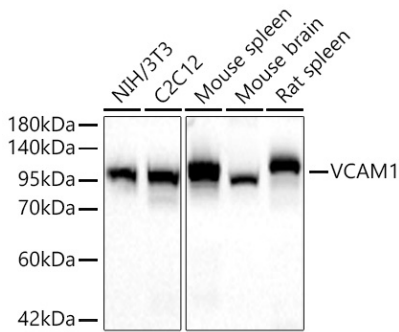
Contact

☎ | 400-999-6126

✉ | cn.market@abclonal.com.cn

🌐 | www.abclonal.com.cn

Validation Data



Confocal imaging of paraffin-embedded Human kidney tissue using VCAM1 Rabbit pAb (A0279SP, dilution 1:100) followed by a further incubation with Cy3-conjugated Goat anti-Rabbit IgG (H+L) (AS007, dilution 1:500) (Red). DAPI was used for nuclear staining (Blue). High pressure antigen retrieval performed with 0.01M Citrate Buffer (pH 6.0) prior to IF staining. Objective: 40x.