

c-Fos Rabbit pAb

Catalog No.: A0236 **33 Publications**

Basic Information

Observed MW

55-60 kDa

Calculated MW

41 kDa

Category

Primary antibody

Applications

WB,IP,ELISA

Cross-Reactivity

Human

Background

The Fos gene family consists of 4 members: FOS, FOSB, FOSL1, and FOSL2. These genes encode leucine zipper proteins that can dimerize with proteins of the JUN family, thereby forming the transcription factor complex AP-1. As such, the FOS proteins have been implicated as regulators of cell proliferation, differentiation, and transformation. In some cases, expression of the FOS gene has also been associated with apoptotic cell death.

Recommended Dilutions

WB 1:500 - 1:5000

IP 0.5µg-4µg antibody for
200µg-400µg extracts of
whole cells

ELISA Recommended starting
concentration is 1 µg/mL.
Please optimize the
concentration based on
your specific assay
requirements.

Immunogen Information

Gene ID

2353

Swiss Prot

P01100

Immunogen

Recombinant protein (or fragment). This information is considered to be commercially sensitive.

Synonyms

p55; AP-1; C-FOS; c-Fos

Contact

 | 400-999-6126

 | cn.market@abclonal.com.cn

 | www.abclonal.com.cn

Product Information

Source

Rabbit

Isotype

IgG

Purification

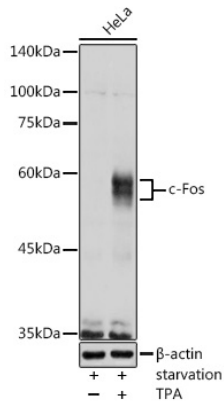
Affinity purification

Storage

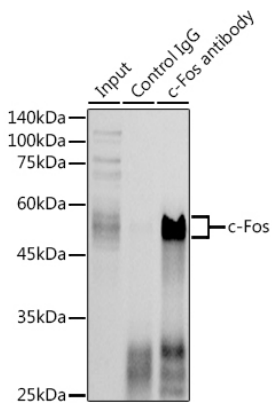
Store at -20°C. Avoid freeze / thaw cycles.

Buffer: PBS containing 50% glycerol, preserved with proclin300 or sodium azide (as specified on the Certificate of Analysis), pH 7.3.

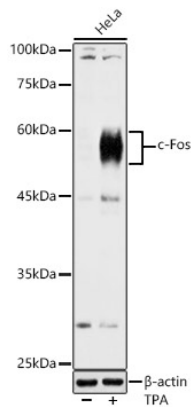
Validation Data



Western blot analysis of lysates from HeLa cells, using c-Fos Rabbit pAb (A0236) at 1:1000 dilution. HeLa cells were treated with PMA/TPA (200 nM) at 37°C for 15 minutes after serum-starvation overnight. Secondary antibody: HRP-conjugated Goat anti-Rabbit IgG (H+L) (AS014) at 1:10000 dilution. Lysates/proteins: 25µg per lane. Blocking buffer: 3% nonfat dry milk in TBST. Detection: ECL Basic Kit (RM00020). Exposure time: 1s.



Immunoprecipitation analysis of 300 µg extracts of HeLa cells using 3 µg c-Fos Rabbit pAb (A0236). Western blot was performed from the immunoprecipitate using c-Fos Rabbit pAb (A0236) at a dilution of 1:1000.



Western blot analysis of lysates from HeLa cells, using c-Fos Rabbit pAb (A0236) at 1:1000 dilution. HeLa cells were treated with PMA/TPA (200 nM) at 37°C for 15 minutes after serum-starvation overnight. Secondary antibody: HRP-conjugated Goat anti-Rabbit IgG (H+L) (AS014) at 1:10000 dilution. Lysates/proteins: 25µg per lane. Blocking buffer: 3% nonfat dry milk in TBST. Detection: ECL Basic Kit (RM00020). Exposure time: 3s.