

# Bak Rabbit pAb

Catalog No.: A0204

14 Publications

## Basic Information

**Observed MW**

25kDa

**Calculated MW**

23kDa

**Category**

Primary antibody

**Applications**

ELISA, WB, IF/ICC, IP

**Cross-Reactivity**

Human, Mouse, Rat

## Background

The protein encoded by this gene belongs to the BCL2 protein family. BCL2 family members form oligomers or heterodimers and act as anti- or pro-apoptotic regulators that are involved in a wide variety of cellular activities. This protein localizes to mitochondria, and functions to induce apoptosis. It interacts with and accelerates the opening of the mitochondrial voltage-dependent anion channel, which leads to a loss in membrane potential and the release of cytochrome c. This protein also interacts with the tumor suppressor P53 after exposure to cell stress.

## Recommended Dilutions

**WB** 1:500 - 1:1000**IF/ICC** 1:50 - 1:200**IP** 0.5µg-4µg antibody for  
200µg-400µg extracts of  
whole cells

## Immunogen Information

**Gene ID**

578

**Swiss Prot**

Q16611

**Immunogen**

A synthetic peptide corresponding to a sequence within amino acids 50-150 of human Bak (NP\_001179.1).

**Synonyms**

BAK; CDN1; BCL2L7; BAK-LIKE; Bak

## Contact

 | 400-999-6126 | [cn.market@abclonal.com.cn](mailto:cn.market@abclonal.com.cn) | [www.abclonal.com.cn](http://www.abclonal.com.cn)

## Product Information

**Source**

Rabbit

**Isotype**

IgG

**Purification**

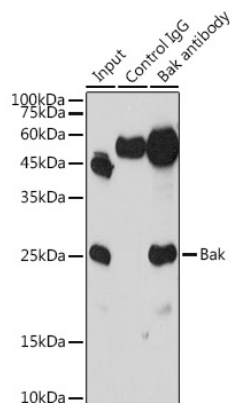
Affinity purification

**Storage**

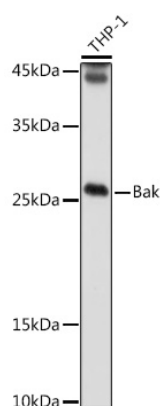
Store at -20°C. Avoid freeze / thaw cycles.

Buffer: PBS with 0.01% thimerosal, 50% glycerol, pH7.3.

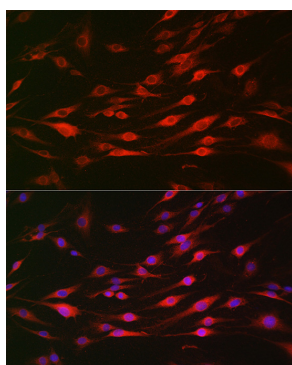
## Validation Data



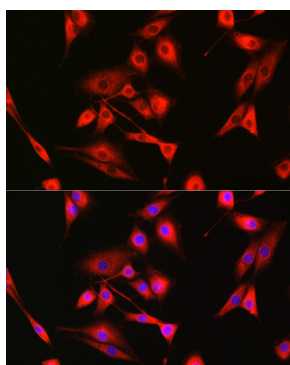
Immunoprecipitation analysis of 300 µg extracts of THP-1 cells using 3 µg Bak antibody (A0204). Western blot was performed from the immunoprecipitate using Bak antibody (A0204) at a dilution of 1:1000.



Western blot analysis of lysates from THP-1 cells, using Bak Rabbit pAb (A0204) at 1:1000 dilution. Secondary antibody: HRP Goat Anti-Rabbit IgG (H+L) (AS014) at 1:10000 dilution. Lysates/proteins: 25µg per lane. Blocking buffer: 3% nonfat dry milk in TBST. Detection: ECL Basic Kit (RM00020). Exposure time: 180s.



Immunofluorescence analysis of C6 cells using Bak Rabbit pAb (A0204) at dilution of 1:100 (40x lens). Secondary antibody: Cy3 Goat Anti-Rabbit IgG (H+L) (AS007) at 1:500 dilution. Blue: DAPI for nuclear staining.



Immunofluorescence analysis of NIH/3T3 cells using Bak Rabbit pAb (A0204) at dilution of 1:100 (40x lens). Secondary antibody: Cy3 Goat Anti-Rabbit IgG (H+L) (AS007) at 1:500 dilution. Blue: DAPI for nuclear staining.