

ALDH1A1 Rabbit mAb

Catalog No.: A0157

Recombinant

2 Publications

Basic Information

Observed MW

55kDa

Calculated MW

55kDa

Category

Primary antibody

Applications

ELISA, WB, IF/ICC, IP

Cross-Reactivity

Human, Mouse, Rat

CloneNo number

ARC52440

Background

The protein encoded by this gene belongs to the aldehyde dehydrogenase family. Aldehyde dehydrogenase is the next enzyme after alcohol dehydrogenase in the major pathway of alcohol metabolism. There are two major aldehyde dehydrogenase isozymes in the liver, cytosolic and mitochondrial, which are encoded by distinct genes, and can be distinguished by their electrophoretic mobility, kinetic properties, and subcellular localization. This gene encodes the cytosolic isozyme. Studies in mice show that through its role in retinol metabolism, this gene may also be involved in the regulation of the metabolic responses to high-fat diet.

Recommended Dilutions

WB 1:2000 - 1:20000**IF/ICC** 1:50 - 1:200**IP** 0.5µg-4µg antibody for
200µg-400µg extracts of
whole cells

Immunogen Information

Gene ID

216

Swiss Prot

P00352

Immunogen

A synthetic peptide corresponding to a sequence within amino acids 250-350 of human ALDH1A1 (NP_000680.2).

Synonyms

ALDC; ALDH1; HEL-9; HEL12; PUMB1; ALDH11; RALDH1; ALDH-E1; HEL-S-53e; ALDH1A1

Contact

 | 400-999-6126 | cn.market@abclonal.com.cn | www.abclonal.com.cn

Product Information

Source

Rabbit

Isotype

IgG

Purification

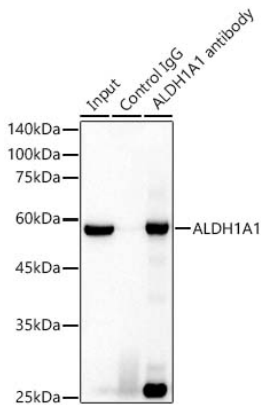
Affinity purification

Storage

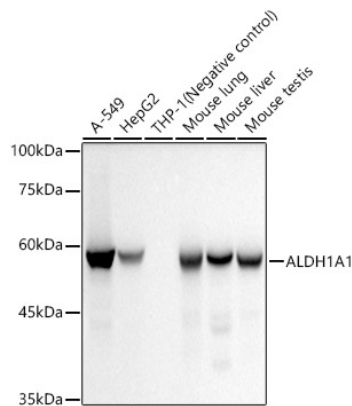
Store at -20°C. Avoid freeze / thaw cycles.

Buffer: PBS with 0.05% proclin300, 0.05% BSA, 50% glycerol, pH7.3.

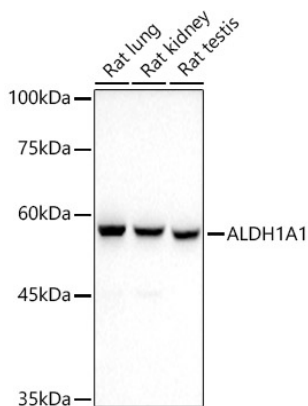
Validation Data



Immunoprecipitation analysis of 300 µg extracts of A-549 cells using 3 µg ALDH1A1 Rabbit mAb antibody (A0157). Western blot was performed from the immunoprecipitate using ALDH1A1 Rabbit mAb (A0157) at a dilution of 1:20000.

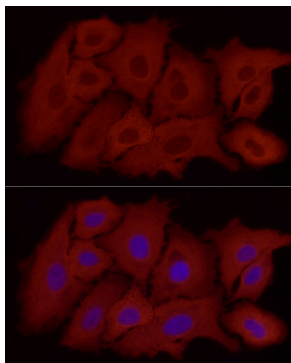


Western blot analysis of various lysates, using ALDH1A1 Rabbit mAb (A0157) at 1:20000 dilution. Secondary antibody: HRP Goat Anti-Rabbit IgG (H+L) (AS014) at 1:10000 dilution. Lysates/proteins: 25µg per lane. Blocking buffer: 3% nonfat dry milk in TBST. Detection: ECL Basic Kit (RM00020). Exposure time: 10s.

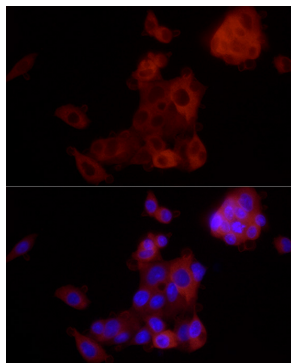


Western blot analysis of various lysates, using ALDH1A1 Rabbit mAb (A0157) at 1:20000 dilution. Secondary antibody: HRP Goat Anti-Rabbit IgG (H+L) (AS014) at 1:10000 dilution. Lysates/proteins: 25µg per lane. Blocking buffer: 3% nonfat dry milk in TBST. Detection: ECL Basic Kit (RM00020). Exposure time: 90s.

Validation Data



Immunofluorescence analysis of A549 using ALDH1A1 Rabbit mAb (A0157) at dilution of 1:100 (40x lens). Blue: DAPI for nuclear staining.



Immunofluorescence analysis of Hep G2 using ALDH1A1 Rabbit mAb (A0157) at dilution of 1:100 (40x lens). Blue: DAPI for nuclear staining.