

# KAT9/Elp3 Rabbit mAb

Catalog No.: A0020 **Recombinant**

## Basic Information

### Observed MW

62kDa

### Calculated MW

62kDa

### Category

Primary antibody

### Applications

WB,IHC-P,ELISA

### Cross-Reactivity

Human, Mouse, Rat

### CloneNo number

ARC1806

## Background

Enables acetyltransferase activity and phosphorylase kinase regulator activity. Involved in regulation of transcription by RNA polymerase II and tRNA wobble uridine modification. Located in cytosol and nucleolus. Part of elongator holoenzyme complex.

## Recommended Dilutions

**WB** 1:1000 - 1:6000

**IHC-P** 1:100 - 1:1000

**ELISA** Recommended starting concentration is 1 µg/mL. Please optimize the concentration based on your specific assay requirements.

## Immunogen Information

### Gene ID

55140

### Swiss Prot

Q9H9T3

### Immunogen

Recombinant protein (or fragment). This information is considered to be commercially sensitive.

### Synonyms

KAT9; KAT9/Elp3

## Contact

☎ | 400-999-6126

✉ | [cn.market@abclonal.com.cn](mailto:cn.market@abclonal.com.cn)

🌐 | [www.abclonal.com.cn](http://www.abclonal.com.cn)

## Product Information

### Source

Rabbit

### Isotype

IgG

### Purification

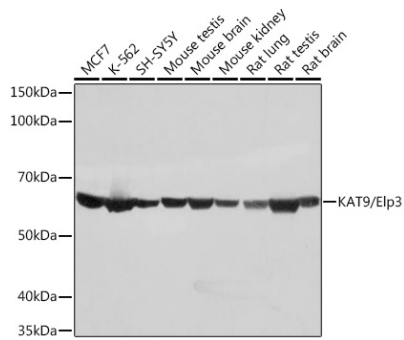
Affinity purification

### Storage

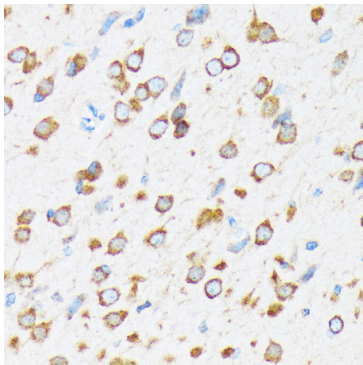
Store at -20°C. Avoid freeze / thaw cycles.

Buffer: PBS containing 50% glycerol and 0.05% BSA, preserved with proclin300 or sodium azide (as specified on the Certificate of Analysis), pH 7.3.

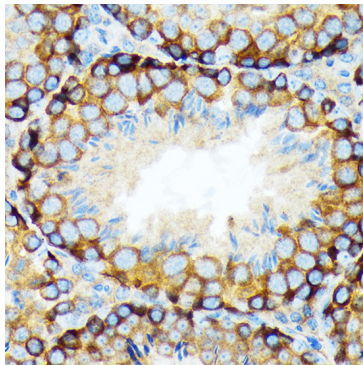
## Validation Data



Western blot analysis of various lysates using KAT9/Elp3 Rabbit mAb (A0020) at 1:1000 dilution. Secondary antibody: HRP-conjugated Goat anti-Rabbit IgG (H+L) (AS014) at 1:10000 dilution. Lysates/proteins: 25µg per lane. Blocking buffer: 3% nonfat dry milk in TBST. Detection: ECL Basic Kit (RM00020). Exposure time: 1s.



Immunohistochemistry analysis of paraffin-embedded Rat brain using KAT9/Elp3 Rabbit mAb (A0020) at dilution of 1:100 (40x lens). Microwave antigen retrieval performed with 0.01M Tris/EDTA Buffer (pH 9.0) prior to IHC staining.



Immunohistochemistry analysis of paraffin-embedded Mouse testis using KAT9/Elp3 Rabbit mAb (A0020) at dilution of 1:100 (40x lens). Microwave antigen retrieval performed with 0.01M Tris/EDTA Buffer (pH 9.0) prior to IHC staining.