

# Cytokeratin 4 (KRT4) Rabbit mAb

Catalog No.: A0013 **Recombinant**

## Basic Information

**Observed MW**

57kDa

**Calculated MW**

56kDa

**Category**

Primary antibody

**Applications**

WB, IHC-P, IF/ICC, ELISA

**Cross-Reactivity**

Human, Mouse

**CloneNo number**

ARC1804

## Background

The protein encoded by this gene is a member of the keratin gene family. The type II cytokeratins consist of basic or neutral proteins which are arranged in pairs of heterotypic keratin chains coexpressed during differentiation of simple and stratified epithelial tissues. This type II cytokeratin is specifically expressed in differentiated layers of the mucosal and esophageal epithelia with family member KRT13. Mutations in these genes have been associated with White Sponge Nevus, characterized by oral, esophageal, and anal leukoplakia. The type II cytokeratins are clustered in a region of chromosome 12q12-q13.

## Recommended Dilutions

**WB** 1:1000 - 1:4000**IHC-P** 1:500 - 1:2000**IF/ICC** 1:100 - 1:400

**ELISA** Recommended starting concentration is 1 µg/mL. Please optimize the concentration based on your specific assay requirements.

## Immunogen Information

**Gene ID**

3851

**Swiss Prot**

P19013

**Immunogen**

Synthetic peptide. This information is considered to be commercially sensitive.

**Synonyms**

K4; CK4; CK-4; CYK4; WSN1; Cytokeratin 4 (KRT4)

## Contact

 | 400-999-6126 | [cn.market@abclonal.com.cn](mailto:cn.market@abclonal.com.cn) | [www.abclonal.com.cn](http://www.abclonal.com.cn)

## Product Information

**Source**

Rabbit

**Isotype**

IgG

**Purification**

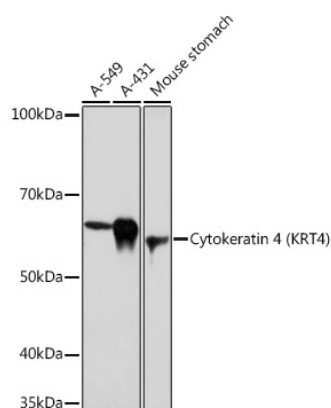
Affinity purification

**Storage**

Store at -20°C. Avoid freeze / thaw cycles.

Buffer: PBS with 0.02% sodium azide, 0.05% BSA, 50% glycerol, pH7.3.

## Validation Data



Western blot analysis of various lysates using Cytokeratin 4 (KRT4) Rabbit mAb (A0013) at 1:1000 dilution.

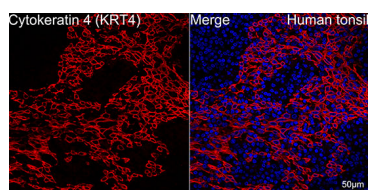
Secondary antibody: HRP-conjugated Goat anti-Rabbit IgG (H+L) (AS014) at 1:10000 dilution.

Lysates/proteins: 25µg per lane.

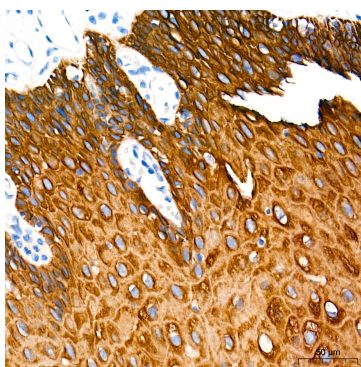
Blocking buffer: 3% nonfat dry milk in TBST.

Detection: ECL Basic Kit (RM00020).

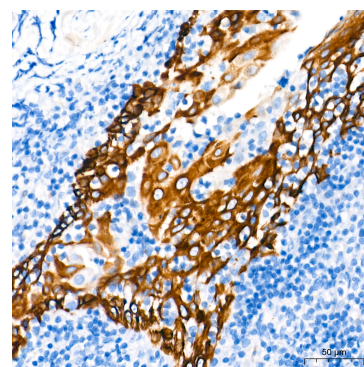
Exposure time: 30s.



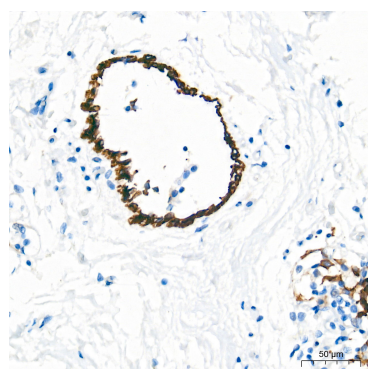
Confocal imaging of human tonsil tissue using Cytokeratin 4 (KRT4) Rabbit mAb (A0013, dilution 1:100) (Red). DAPI was used for nuclear staining (blue). Objective: 40x. Perform high pressure antigen retrieval with 10 mM citrate buffer (pH 6.0) before commencing with IF staining protocol.



Immunohistochemistry analysis of paraffin-embedded human esophagus tissue using Cytokeratin 4 (KRT4) Rabbit mAb (A0013) at a dilution of 1:500 (40x lens). High pressure antigen retrieval performed with 0.01M Tris-EDTA Buffer (pH 9.0) prior to IHC staining.



Immunohistochemistry analysis of paraffin-embedded human tonsil tissue using Cytokeratin 4 (KRT4) Rabbit mAb (A0013) at a dilution of 1:500 (40x lens). High pressure antigen retrieval performed with 0.01M Tris-EDTA Buffer (pH 9.0) prior to IHC staining.



Immunohistochemistry analysis of paraffin-embedded human breast tissue using Cytokeratin 4 (KRT4) Rabbit mAb (A0013) at a dilution of 1:500 (40x lens). High pressure antigen retrieval performed with 0.01M Tris-EDTA Buffer (pH 9.0) prior to IHC staining.