

# Human TBNK Panel

Catalog Number: RK40002

Size: 1 Box

## ◆ Description

The 6-fluorescence Human TBNK panel has been designed for reliable identification of human T, B, and NK lymphocyte populations in human blood or tissue samples.

ABflo<sup>®</sup> multi-fluorescence panel RK40002 covers the core CD markers of CD45, CD3, CD19, CD56, CD4, and CD8a. Our plots showed clear subgroups of CD3<sup>+</sup> T cells, CD4<sup>+</sup> Th cells, CD8<sup>+</sup> CTL cells, CD19<sup>+</sup> B cells, CD56<sup>bright</sup> NK cells, CD56<sup>dim</sup> NK cells, CD19<sup>+</sup> CD56<sup>+</sup> NK cell subsets, and CD3<sup>+</sup> CD56<sup>+</sup> NK T cells (cite figures).

## ◆ Applications

FC

## ◆ Reactivity

Human

## ◆ Components

Target	Catalog No.	Fluorochrome	Ex/Em (nm)	Isotype	Clone	Size	Vol. Per Test
CD45	A22494	ABflo <sup>®</sup> 488	491/516	Rabbit IgG	ARC5024-ABf488	100 T	5 µL
CD3	A22797	PerCP-Cy5.5	482/695	Mouse IgG1	AMC0533	100 T	10 µL
CD4	A25282	ABflo <sup>®</sup> 594	588/604	Rabbit IgG	ARC5142-ABf594	100 T	5 µL
CD8a	A24799	APC	650/660	Rabbit IgG	ARC55248-APC	100 T	5 µL

CD19	A22816	PE	565/574	Mouse IgG1	AMC0541	100 T	10 $\mu$ L
CD56	A22828	APC-Cy7	651/779	Mouse IgG1	AMC0544	100 T	10 $\mu$ L

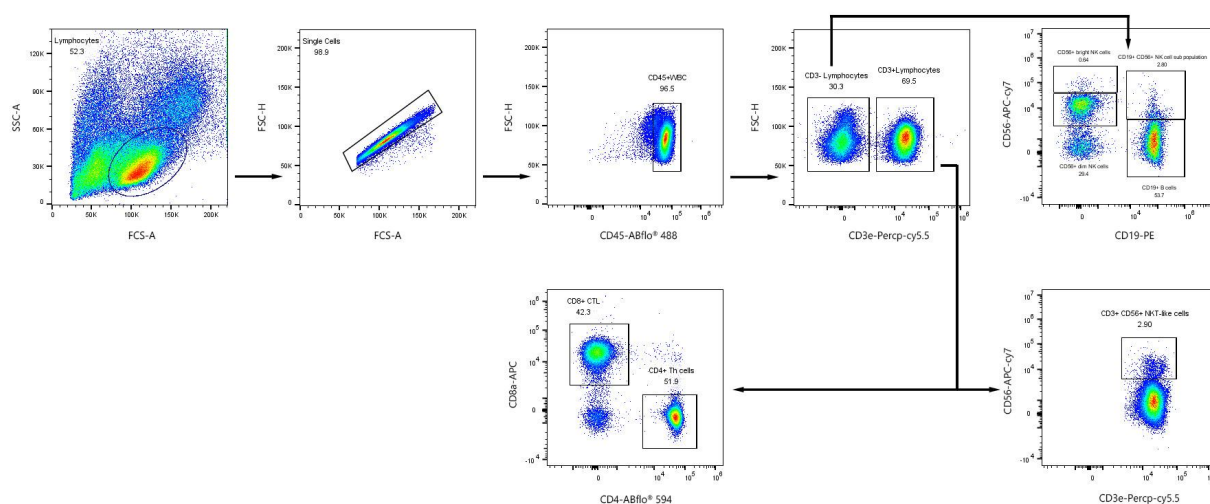
Note:

This reagent has been pre-diluted for use at the recommended Volume per Test. We typically use  $1 \times 10^6$  cells in a 100  $\mu$ L experimental sample (a test).

### ◆ Storage

Store at 4°C. Avoid freeze/thaw cycles.

### ◆ Validation Data



Multicolor flow cytometry panel to identify human T cells, B cells, and NK cells. PBMCs were stained with anti-human CD45 ABflo® 488, CD3 Percp-Cy5.5, CD4 ABflo® 594, CD8a APC, CD19 PE, CD56 APC-Cy7. All antibodies are validated for cytometry. CD4 T cells are defined as CD3<sup>+</sup> CD4<sup>+</sup>; CD8 T cells are defined as CD3<sup>+</sup> CD8a<sup>+</sup>; B cells are CD3<sup>+</sup> CD19<sup>+</sup>; NK cells are CD3<sup>+</sup> CD56<sup>+</sup>; NKT cells are CD3<sup>+</sup> CD56<sup>+</sup>.