

# Phospho-p70 S6 Kinase 1-T389 Rabbit pAb

Catalog No.: AP0564

33 Publications

## Basic Information

**Observed MW**

70kDa/85kDa

**Calculated MW**

59kDa

**Category**

Primary antibody

**Applications**

ELISA, WB, IF/ICC

**Cross-Reactivity**

Human, Mouse, Rat

## Background

This gene encodes a member of the ribosomal S6 kinase family of serine/threonine kinases. The encoded protein responds to mTOR (mammalian target of rapamycin) signaling to promote protein synthesis, cell growth, and cell proliferation. Activity of this gene has been associated with human cancer. Alternatively spliced transcript variants have been observed. The use of alternative translation start sites results in isoforms with longer or shorter N-termini which may differ in their subcellular localizations. There are two pseudogenes for this gene on chromosome 17.

## Recommended Dilutions

**WB** 1:500 - 1:1000**IF/ICC** 1:50 - 1:200

## Immunogen Information

**Gene ID**

6198

**Swiss Prot**

P23443

**Immunogen**

A synthetic phosphorylated peptide around T389 of human P70 S6K (NP\_003152.1).

**Synonyms**

S6K; PS6K; S6K1; STK14A; p70-S6K; p70 S6KA; p70-alpha; S6K-beta-1; p70(S6K)-alpha; Phospho-p70 S6 Kinase 1-T389

## Contact

 | 400-999-6126 | [cn.market@abclonal.com.cn](mailto:cn.market@abclonal.com.cn) | [www.abclonal.com.cn](http://www.abclonal.com.cn)

## Product Information

**Source**

Rabbit

**Isotype**

IgG

**Purification**

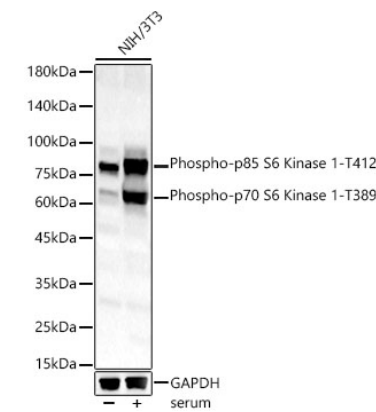
Affinity purification

**Storage**

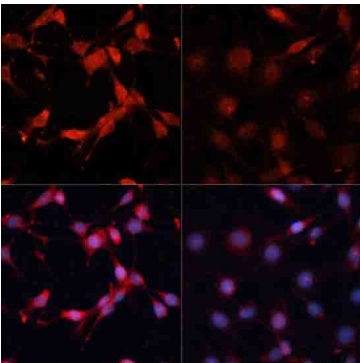
Store at -20°C. Avoid freeze / thaw cycles.

Buffer: PBS with 0.05% proclin300, 50% glycerol, pH7.3.

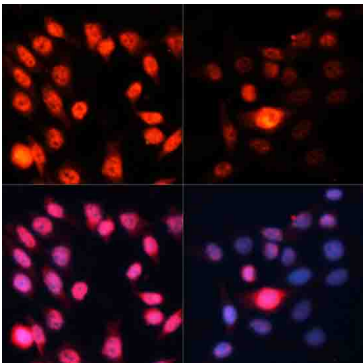
Validation Data



Western blot analysis of lysates from NIH/3T3 cells, using Phospho-p70 S6 Kinase 1-T389 Rabbit pAb (AP0564) at 1:1000 dilution. NIH/3T3 cells were treated by 10% FBS at 37°C for 30 minutes after serum-starvation overnight.  
Secondary antibody: HRP Goat Anti-Rabbit IgG (H+L) (AS014) at 1:10000 dilution.  
Lysates/proteins: 25µg per lane.  
Blocking buffer: 3% nonfat dry milk in TBST.  
Detection: ECL Basic Kit (RM00020).  
Exposure time: 180s.



Immunofluorescence analysis of C6 cells using Phospho-p70 S6 Kinase 1-T389 Rabbit pAb (AP0564) at dilution of 1:100. C6 cells were treated by Serum-starvation overnight at 37°C.



Immunofluorescence analysis of HeLa cells using Phospho-p70 S6 Kinase 1-T389 Rabbit pAb (AP0564) at dilution of 1:100. HeLa cells were treated by Serum-starvation overnight at 37°C.