

HRP-conjugated Rabbit anti Myc-Tag mAb

Catalog No.: AE102

Basic Information

Observed MW

55kDa/52kDa/72kDa

Calculated MW

Category

Tag antibody

Applications

ELISA, WB

Cross-Reactivity

Species independent

CloneNo number

ARC5004-12-HRP

Conjugate

HRP

Recommended Dilutions

WB 1:2000 - 1:7000

Background

Protein tags are peptide sequences genetically grafted onto a recombinant protein. Often these tags are removable by chemical agents or by enzymatic means, such as proteolysis or intein splicing. Tags are attached to proteins for various purposes. Epitope tags are short peptide sequences which are chosen because high-affinity antibodies can be reliably produced in many different species. These are usually derived from viral genes, which explain their high immunoreactivity. Epitope tags include V5-tag, Myc-tag, HA-tag and NE-tag. These tags are particularly useful for western blotting, immunofluorescence and immunoprecipitation experiments, although they also find use in antibody purification.

Immunogen Information

Gene ID

Swiss Prot

Immunogen

A synthetic peptide corresponding to Myc tag.

Synonyms

Myc;Myc tag;Myc-tag

Contact

 | 400-999-6126

 | cn.market@abclonal.com.cn

 | www.abclonal.com.cn

Product Information

Source

Rabbit

Isotype

IgG

Purification

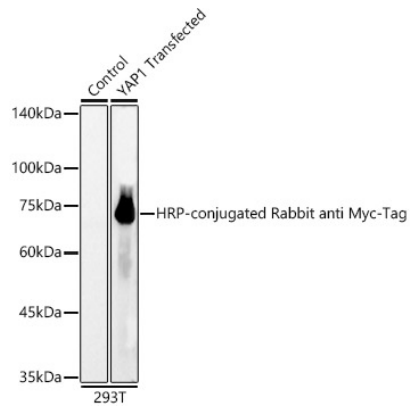
Affinity purification

Storage

Store at -20°C. Avoid freeze / thaw cycles.

Buffer: PBS with 0.05% proclin300, 50% glycerol, pH7.3.

Validation Data



Western blot analysis of extracts of normal 293T cells, 293T transfected with YAP1 Protein, using HRP-conjugated Rabbit anti Myc-Tag mAb (AE102) at 1:6000 dilution.