

Rabbit anti GFP-Tag mAb

Catalog No.: AE078

6 Publications

Basic Information

Observed MW

25kDa

Calculated MW

27kDa

Category

Tag antibody

Applications

ELISA,WB,IF/ICC,IP,CHIP

Cross-Reactivity

Species independent

CloneNo number

ARC50809

Background

The green fluorescent protein (GFP) is a protein composed of 238 amino acid residues (26.9 kDa) that exhibits bright green fluorescence when exposed to light in the blue to ultraviolet range. Although many other marine organisms have similar green fluorescent proteins, GFP traditionally refers to the protein first isolated from the jellyfish *Aequorea victoria*. The GFP from *A. victoria* has a major excitation peak at a wavelength of 395 nm and a minor one at 475 nm. Its emission peak is at 509 nm, which is in the lower green portion of the visible spectrum. The fluorescence quantum yield (QY) of GFP is 0.79. The GFP from the sea pansy (*Renilla reniformis*) has a single major excitation peak at 498 nm. GFP makes for an excellent tool in many forms of biology due to its ability to form internal chromophore without requiring any accessory cofactors, gene products, or enzymes / substrates other than molecular oxygen. In cell and molecular biology, the GFP gene is frequently used as a reporter of expression.

Recommended Dilutions

WB 1:10000 - 1:40000**IF/ICC** 1:50 - 1:200**IP** 0.5µg-4µg antibody for
200µg-400µg extracts of
whole cells**CHIP** 5µg antibody for
10µg-15µg of Chromatin

Immunogen Information

Gene ID**Swiss Prot**

P42212

Immunogen

Recombinant fusion protein containing a sequence corresponding to amino acids 1-238 of GFP.

Synonyms

GFP;GFP tag;GFP-tag

Contact

 | 400-999-6126 | cn.market@abclonal.com.cn | www.abclonal.com.cn

Product Information

Source

Rabbit

Isotype

IgG

Purification

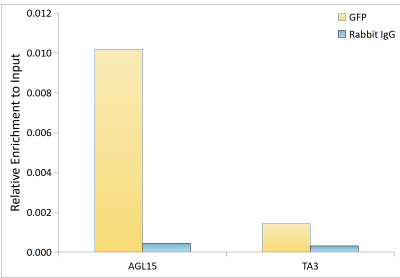
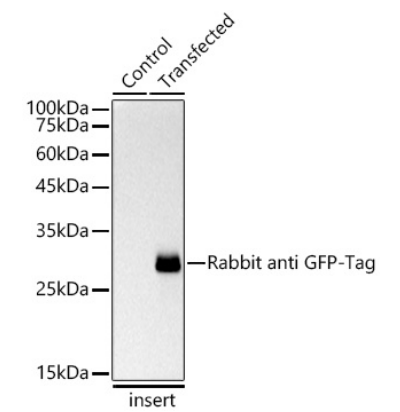
Affinity purification

Storage

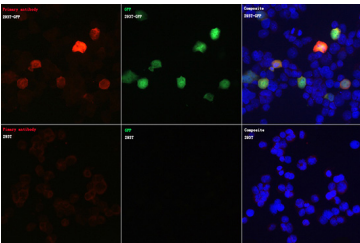
Store at -20°C. Avoid freeze / thaw cycles.

Buffer: PBS with 0.05% proclin300,0.05% BSA,50% glycerol,pH7.3.

Validation Data



Chromatin immunoprecipitation was performed with cross-linked chromatin from Arabidopsis thaliana leaf cells transfected with GFP, using Rabbit anti GFP-Tag mAb (AE078) and Rabbit IgG (AC042). The amount of immunoprecipitated DNA was checked by quantitative PCR. Histogram compares the ratio of the immunoprecipitated DNA versus the input.



Immunofluorescence analysis of 293T and 293T-GFP cells using Rabbit anti GFP-Tag mAb (AE078) at dilution of 1:100 (40x lens). Secondary antibody: Cy3 Goat Anti-Rabbit IgG (H+L) (AS007) at 1:500 dilution. Blue: DAPI for nuclear staining.