

eIF3B Rabbit mAb

Catalog No.: A9143 **Recombinant** **1 Publications**

Basic Information

Observed MW

116kDa

Calculated MW

93kDa

Category

Primary antibody

Applications

ELISA, WB, IF/ICC

Cross-Reactivity

Human, Mouse, Rat

CloneNo number

ARC1448

Background

Enables RNA binding activity. Contributes to translation initiation factor activity. Involved in several processes, including IRES-dependent viral translational initiation; translational initiation; and viral translational termination-reinitiation. Located in extracellular exosome. Part of eukaryotic translation initiation factor 3 complex.

Recommended Dilutions

WB	1:500 - 1:1000
IF/ICC	1:50 - 1:200

Immunogen Information

Gene ID

8662

Swiss Prot

P55884

Immunogen

Recombinant fusion protein containing a sequence corresponding to amino acids 101-200 of human eIF3B (NP_003742.2).

Synonyms

PRT1; EIF3S9; EIF3-ETA; EIF3-P110; EIF3-P116; eIF3B

Contact

 | 400-999-6126

 | cn.market@abclonal.com.cn

 | www.abclonal.com.cn

Product Information

Source

Rabbit

Isotype

IgG

Purification

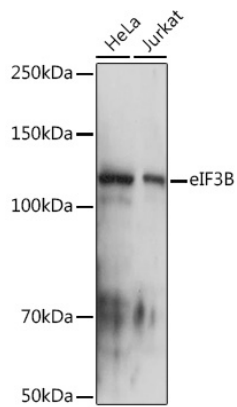
Affinity purification

Storage

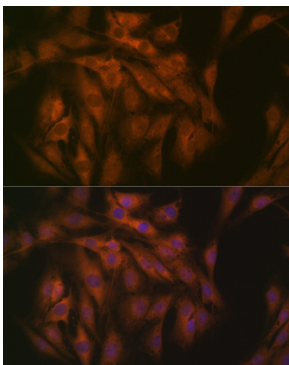
Store at -20°C. Avoid freeze / thaw cycles.

Buffer: PBS with 0.02% sodium azide, 0.05% BSA, 50% glycerol, pH7.3.

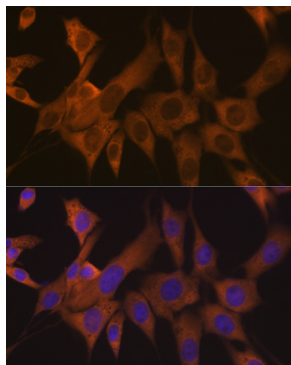
Validation Data



Western blot analysis of extracts of various cell lines, using eIF3B Rabbit mAb (A9143) at 1:1000 dilution. Secondary antibody: HRP Goat Anti-Rabbit IgG (H+L) (AS014) at 1:10000 dilution. Lysates/proteins: 25µg per lane. Blocking buffer: 3% nonfat dry milk in TBST. Detection: ECL Basic Kit (RM00020). Exposure time: 1s.



Immunofluorescence analysis of C6 cells using eIF3B Rabbit mAb (A9143) at dilution of 1:100 (40x lens). Blue: DAPI for nuclear staining.



Immunofluorescence analysis of NIH-3T3 cells using eIF3B Rabbit mAb (A9143) at dilution of 1:100 (40x lens). Blue: DAPI for nuclear staining.