

# Aggrecan Rabbit pAb

Catalog No.: A8536 **23 Publications**

## Basic Information

### Observed MW

Refer to figures

### Calculated MW

261kDa

### Category

Primary antibody

### Applications

ELISA, IHC-P

### Cross-Reactivity

Rat

## Background

This gene is a member of the aggrecan/versican proteoglycan family. The encoded protein is an integral part of the extracellular matrix in cartilaginous tissue and it withstands compression in cartilage. Mutations in this gene may be involved in skeletal dysplasia and spinal degeneration. Multiple alternatively spliced transcript variants that encode different protein isoforms have been observed in this gene.

## Recommended Dilutions

IHC-P 1:50 - 1:200

## Immunogen Information

### Gene ID

176

### Swiss Prot

P16112

### Immunogen

Recombinant fusion protein containing a sequence corresponding to amino acids 420-575 of human Aggrecan (NP\_037359.3).

### Synonyms

AGC1; SEDK; AGCAN; CSPG1; MSK16; CSPGCP; SSOAOD; Aggrecan

## Contact

☎ | 400-999-6126

✉ | [cn.market@abclonal.com.cn](mailto:cn.market@abclonal.com.cn)

🌐 | [www.abclonal.com.cn](http://www.abclonal.com.cn)

## Product Information

### Source

Rabbit

### Isotype

IgG

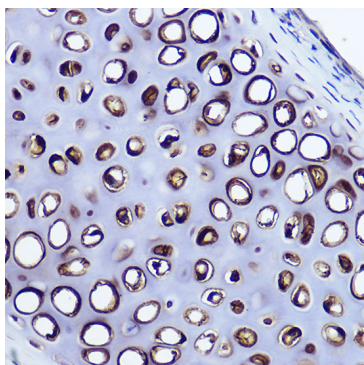
### Purification

Affinity purification

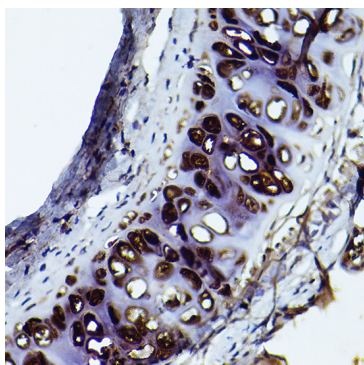
### Storage

Store at -20°C. Avoid freeze / thaw cycles.

Buffer: PBS with 0.05% proclin300, 50% glycerol, pH7.3.



Immunohistochemistry analysis of paraffin-embedded Mouse cartilage using Aggrecan Rabbit pAb (A8536) at dilution of 1:50 (40x lens). Perform high pressure antigen retrieval with 10 mM citrate buffer pH 6.0 before commencing with IHC staining protocol.



Immunohistochemistry analysis of paraffin-embedded Rat cartilage using Aggrecan Rabbit pAb (A8536) at dilution of 1:50 (40x lens). Perform high pressure antigen retrieval with 10 mM citrate buffer pH 6.0 before commencing with IHC staining protocol.