

CD20 Rabbit mAb

Catalog No.: A4893

Recombinant

6 Publications

Basic Information

Observed MW

30-50kDa

Calculated MW

33kDa

Category

Primary antibody

Applications

ELISA, WB, IHC-P, IF/ICC, FC

Cross-Reactivity

Human

CloneNo number

ARC51683

Background

This gene encodes a member of the membrane-spanning 4A gene family. Members of this nascent protein family are characterized by common structural features and similar intron/exon splice boundaries and display unique expression patterns among hematopoietic cells and nonlymphoid tissues. This gene encodes a B-lymphocyte surface molecule which plays a role in the development and differentiation of B-cells into plasma cells. This family member is localized to 11q12, among a cluster of family members. Alternative splicing of this gene results in two transcript variants which encode the same protein.

Recommended Dilutions

WB	1:500 - 1:1000
IHC-P	1:2000 - 1:10000
IF/ICC	1:500 - 1:1000
FC	1:50 - 1:200

Immunogen Information

Gene ID

931

Swiss Prot

P11836

Immunogen

A synthetic peptide corresponding to a sequence within amino acids 100-200 of human CD20 (NP_068769.2).

Synonyms

B1; S7; Bp35; CD20; FMC7; CVID5; LEU-16

Contact

	400-999-6126
	cn.market@abclonal.com.cn
	www.abclonal.com.cn

Product Information

Source

Rabbit

Isotype

IgG

Purification

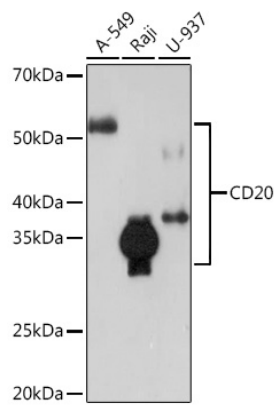
Affinity purification

Storage

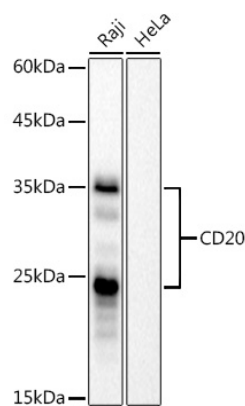
Store at -20°C. Avoid freeze / thaw cycles.

Buffer: PBS with 0.05% proclin300, 0.05% BSA, 50% glycerol, pH7.3.

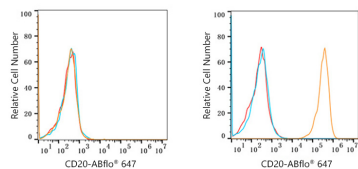
Validation Data



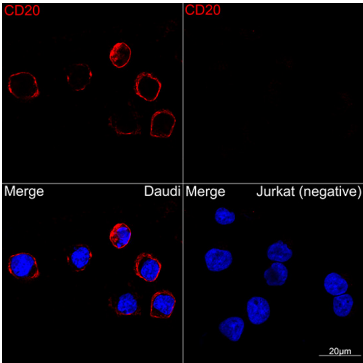
Western blot analysis of extracts of various cell lines, using CD20 Rabbit mAb (A4893) at 1:1000 dilution.
Secondary antibody: HRP Goat Anti-Rabbit IgG (H+L) (AS014) at 1:10000 dilution.
Lysates/proteins: 25µg per lane.
Blocking buffer: 3% nonfat dry milk in TBST.
Detection: ECL Enhanced Kit (RM00021).
Exposure time: 3min.



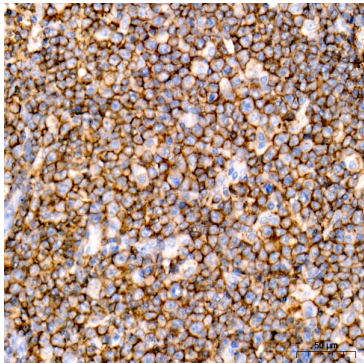
Western blot analysis of various lysates, using CD20 Rabbit mAb (A4893) at 1:1000 dilution.
Secondary antibody: HRP Goat Anti-Rabbit IgG (H+L) (AS014) at 1:10000 dilution.
Lysates/proteins: 25µg per lane.
Blocking buffer: 3% nonfat dry milk in TBST.
Detection: ECL Basic Kit (RM00020).
Negative control (NC): HeLa
Exposure time: 60s.



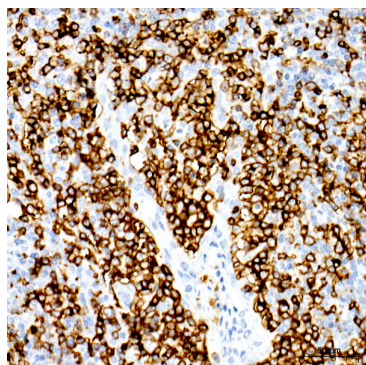
Flow cytometry: 1X10⁶ Jurkat cells (negative control, left) and Daudi cells (right) were surface-stained with CD20 Rabbit mAb (A4893, 10 µg/mL orange line) or ABR0 647 Rabbit IgG isotype control (AC042, 10 µg/mL, blue line). Non-fluorescently stained cells were used as blank control (red line).



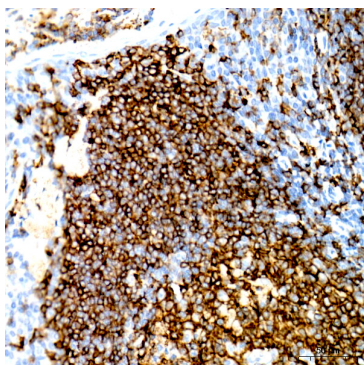
Confocal imaging of Daudi and Jurkat(Negative control) cells using CD20 Rabbit mAb (A4893, dilution 1:1000)(Red). DAPI was used for nuclear staining (blue). Objective: 100x.



Immunohistochemistry analysis of paraffin-embedded Human anaplastic large cell lymphoma using CD20 Rabbit mAb (A4893) at dilution of 1:8000 (40x lens). Perform high pressure antigen retrieval with 10 mM citrate buffer pH 6.0 before commencing with IHC staining protocol.



Immunohistochemistry analysis of paraffin-embedded human tonsil using CD20 Rabbit mAb (A4893) at dilution of 1:8000 (40x lens). Perform high pressure antigen retrieval with 10 mM citrate buffer pH 6.0 before commencing with IHC staining protocol.



Immunohistochemistry analysis of paraffin-embedded human tonsil using CD20 Rabbit mAb (A4893) at dilution of 1:8000 (40x lens). Perform high pressure antigen retrieval with 10 mM citrate buffer pH 6.0 before commencing with IHC staining protocol.