

# ABflo® 647 Rabbit anti-Human CD69 mAb

Catalog No.: A25892

## Basic Information

### Observed MW

**Calculated MW**  
23kDa

**Category**  
Primary antibody

**Applications**  
FC

**Cross-Reactivity**  
Human

**CloneNo number**  
ARC68505-ABflo647

**Conjugate**  
ABflo® 647. Ex:648nm. Em:664nm.

## Background

This gene encodes a member of the calcium dependent lectin superfamily of type II transmembrane receptors. Expression of the encoded protein is induced upon activation of T lymphocytes, and may play a role in proliferation. Furthermore, the protein may act to transmit signals in natural killer cells and platelets.

## Recommended Dilutions

**FC** 5 µl per 10<sup>6</sup> cells in  
100 µl volume

## Immunogen Information

Gene ID	Swiss Prot
969	Q07108

### Immunogen

Recombinant fusion protein containing a sequence corresponding to amino acids 78-199 of human CD69 (NP\_001772.1).

### Synonyms

AIM; EA1; MLR-3; CLEC2C; GP32/28; BL-AC/P26

## Contact

☎	400-999-6126
✉	cn.market@abclonal.com.cn
🌐	www.abclonal.com.cn

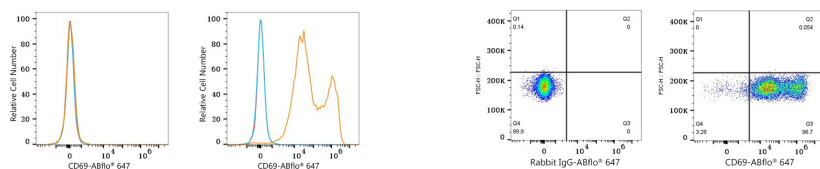
## Product Information

Source	Isotype	Purification
Rabbit	IgG	Affinity purification

### Storage

Store at 2-8°C. Avoid freeze.  
Buffer: PBS with 0.03% proclin300,0.2% BSA,pH7.3.

## Validation Data



Flow cytometry: 1X10<sup>6</sup> 293T cells (negative control, left) and 293T (Transfection, right) cells were surface-stained with ABflo® 647 Rabbit anti-Human CD69 mAb (A25892, 5 µl/Test, orange line) or ABflo® 647 Rabbit IgG isotype control (A22070, 5 µl/Test, blue line). Non-fluorescently stained cells were used as blank control (red line).

Flow cytometry: 1X10<sup>6</sup> 293T (Transfection) cells were surface-stained with ABflo® 647 Rabbit IgG isotype control (A22070, 5 µl/Test, left) or ABflo® 647 Rabbit anti-Human CD69 mAb (A25892, 5 µl/Test, right).