

MonoMethyl-Histone H3-K9 Rabbit pAb

Catalog No.: A2358

10 Publications

Basic Information

Observed MW

14kDa

Calculated MW

16kDa

Category

Primary antibody

Applications

ELISA,DB,WB,IHC-P,IF/ICC,ChIP,ChIP-seq

Cross-Reactivity

Human, Mouse, Rat, Other (Wide Range Predicted)

Background

Histones are basic nuclear proteins that are responsible for the nucleosome structure of the chromosomal fiber in eukaryotes. Nucleosomes consist of approximately 146 bp of DNA wrapped around a histone octamer composed of pairs of each of the four core histones (H2A, H2B, H3, and H4). The chromatin fiber is further compacted through the interaction of a linker histone, H1, with the DNA between the nucleosomes to form higher order chromatin structures. This gene is intronless and encodes a replication-dependent histone that is a member of the histone H3 family. Transcripts from this gene lack polyA tails; instead, they contain a palindromic termination element. This gene is located separately from the other H3 genes that are in the histone gene cluster on chromosome 6p22-p21.3.

Recommended Dilutions

DB 1:500 - 1:2000

WB 1:500 - 1:1000

IHC-P 1:50 - 1:200

IF/ICC 1:50 - 1:200

ChIP 5µg antibody for
5µg-10µg of Chromatin

ChIP-seq 1:20 - 1:100

Immunogen Information

Gene ID

8290/8350

Swiss Prot

Q16695/P68431

Immunogen

A synthetic monomethylated peptide around K9 of human histone H3 (NP_003520.1).

Synonyms

H3t; H3.4; H3/g; H3FT; H3C16; HIST3H3; MonoMethyl-Histone H3-K9

Contact

 | 400-999-6126 | cn.market@abclonal.com.cn | www.abclonal.com.cn

Product Information

Source

Rabbit

Isotype

IgG

Purification

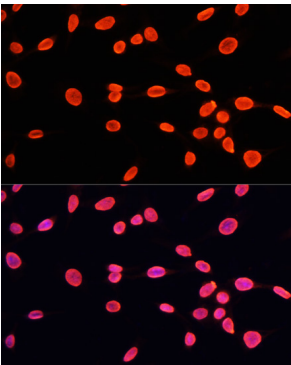
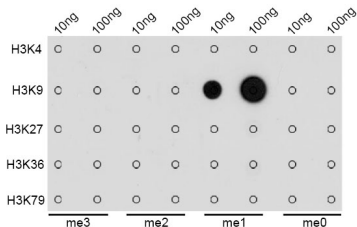
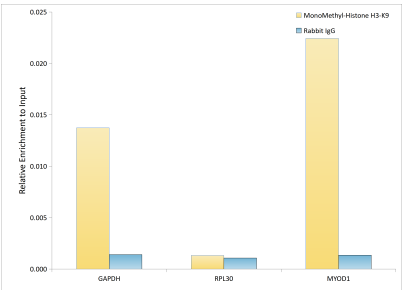
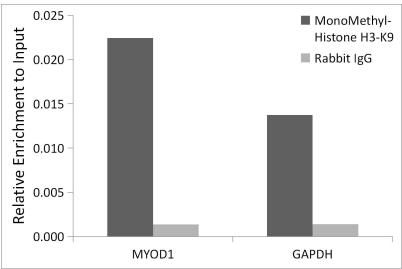
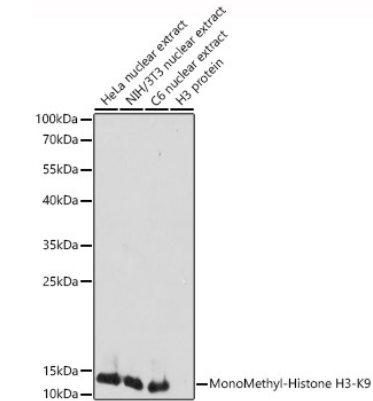
Affinity purification

Storage

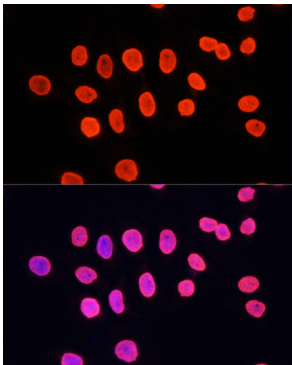
Store at -20°C. Avoid freeze / thaw cycles.

Buffer: PBS with 0.05% proclin300, 50% glycerol, pH7.3.

Validation Data



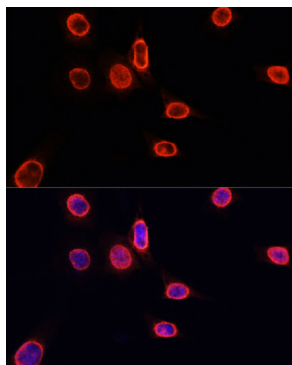
Immunofluorescence analysis of C6 cells using MonoMethyl-Histone H3-K9 Rabbit pAb (A2358) at dilution of 1:100. Secondary antibody: Cy3 Goat Anti-Rabbit IgG (H+L)



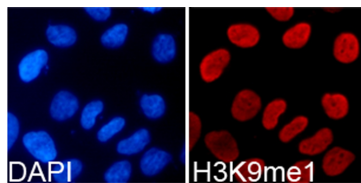
Immunofluorescence analysis of HeLa cells using MonoMethyl-Histone H3-K9 Rabbit pAb (A2358) at dilution of 1:100. Secondary antibody: Cy3 Goat Anti-Rabbit IgG (H+L)

Validation Data

(AS007) at 1:500 dilution. Blue: DAPI for nuclear staining.

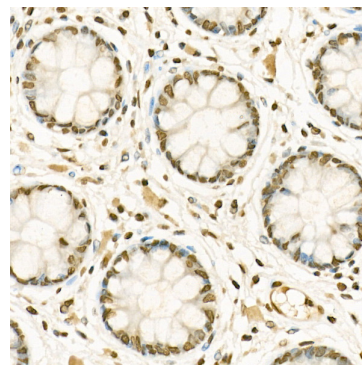


Immunofluorescence analysis of NIH/3T3 cells using MonoMethyl-Histone H3-K9 Rabbit pAb (A2358) at dilution of 1:100. Secondary antibody: Cy3 Goat Anti-Rabbit IgG (H+L) (AS007) at 1:500 dilution. Blue: DAPI for nuclear staining.

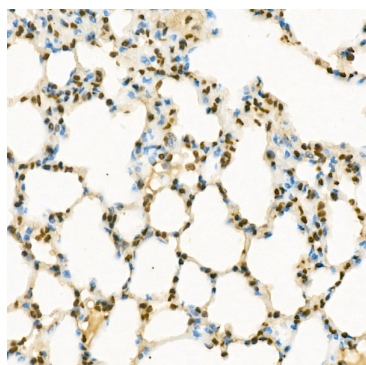


Immunofluorescence analysis of 293T cells using MonoMethyl-Histone H3-K9 Rabbit pAb (A2358). Blue: DAPI for nuclear staining.

(AS007) at 1:500 dilution. Blue: DAPI for nuclear staining.



Immunohistochemistry analysis of paraffin-embedded human colon using MonoMethyl-Histone H3-K9 Rabbit pAb (A2358) at dilution of 1:50 (40x lens). Perform high pressure antigen retrieval with 10 mM citrate buffer pH 6.0 before commencing with IHC staining protocol.



Immunohistochemistry analysis of paraffin-embedded mouse lung using MonoMethyl-Histone H3-K9 Rabbit pAb (A2358) at dilution of 1:50 (40x lens). Perform high pressure antigen retrieval with 10 mM citrate buffer pH 6.0 before commencing with IHC staining protocol.