

ABflo® 488 Rabbit anti-Mouse CD34 mAb

Catalog No.: A23107

1 Publications

Basic Information

Observed MW

Calculated MW

35kDa/41kDa

Category

Primary antibody

Applications

IF/ICC,FC

Cross-Reactivity

Mouse

CloneNo number

ARC58336-ABf488

Conjugate

ABflo® 488. Ex:491nm. Em:516nm.

Background

Enables sulfate binding activity. Acts upstream of or within leukocyte migration. Located in cytoplasm; external side of plasma membrane; and extracellular region. Is expressed in several structures, including alimentary system; cardiovascular system; extraembryonic component; genitourinary system; and skin. Orthologous to human CD34 (CD34 molecule).

Recommended Dilutions

IF/ICC 1:50 - 1:200

FC 5 µl per 10⁶ cells in
100 µl volume

Immunogen Information

Gene ID

12490

Swiss Prot

Q64314

Immunogen

Recombinant fusion protein containing a sequence corresponding to amino acids 35-287 of mouse CD34(NP_598415.1)

Synonyms

CD34;CD34 molecule;GIG3;MORT1

Contact

☎ | 400-999-6126

✉ | cn.market@abclonal.com.cn

🌐 | www.abclonal.com.cn

Product Information

Source

Rabbit

Isotype

IgG

Purification

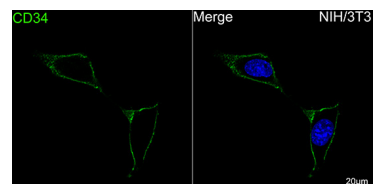
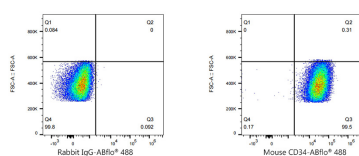
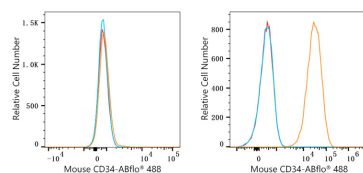
Affinity purification

Storage

Store at 2-8°C. Avoid freeze.

Buffer: PBS with 0.03% proclin300,0.2% BSA,pH7.3.

Validation Data



Flow cytometry: 1×10^6 Neuro-2a cells (negative control, Left) and NIH/3T3 cells (Right) were surface-stained with ABflo® 488 Rabbit anti-Mouse CD34 mAb (A23107, 5 µl/Test, orange line) or ABflo® 488 Rabbit IgG isotype control (A22069, 5 µl/Test, blue line). Non-fluorescently stained cells were used as blank control (red line).

Flow cytometry: 1×10^6 NIH/3T3 cells were surface-stained with ABflo® 488 Rabbit IgG isotype control (A22069, 5 µl/Test, left) or ABflo® 488 Rabbit anti-Mouse CD34 mAb (A23107, 5 µl/Test, right).

Confocal imaging of NIH/3T3 cells using ABflo® 488 Rabbit anti-Mouse CD34 mAb (A23107, dilution 1:100). DAPI was used for nuclear staining (Blue). Objective: 100x.