

# RGL3 Rabbit pAb

Catalog No.: A22552

## Basic Information

### Observed MW

62kDa

### Calculated MW

### Category

Primary antibody

### Applications

ELISA, WB

### Cross-Reactivity

Arabidopsis thaliana

## Background

Encodes a DELLA subfamily member that acts as a negative regulator of GA signaling and as a coactivator of ABI3 to promote seed storage protein biosynthesis during the seed maturation stage. Involved in hyperosmotic salinity response, jasmonic acid mediated signaling pathway, negative regulation of gibberellic acid mediated signaling pathway, negative regulation of seed germination, regulation of DNA-templated transcription, regulation of reactive oxygen species metabolic process, regulation of seed dormancy process, response to abscisic acid, response to ethylene, salicylic acid mediated signaling pathway.

## Recommended Dilutions

WB 1:100 - 1:500

## Immunogen Information

### Gene ID

### Swiss Prot

### Immunogen

Recombinant fusion protein containing a sequence corresponding to amino acids 1-106 of Arabidopsis thaliana RGL3. (NP\_197251.1).

### Synonyms

## Contact

 | 400-999-6126

 | [cn.market@abclonal.com.cn](mailto:cn.market@abclonal.com.cn)

 | [www.abclonal.com.cn](http://www.abclonal.com.cn)

## Product Information

### Source

Rabbit

### Isotype

IgG

### Purification

Affinity purification

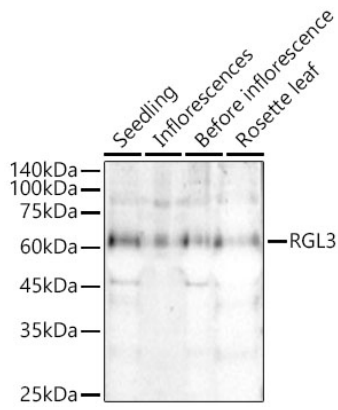
### Storage

Store at -20°C. Avoid freeze / thaw cycles.

Buffer: PBS with 0.05% proclin300, 50% glycerol, pH7.3.

## Validation Data

---



Western blot analysis of extracts of various tissues from *Arabidopsis thaliana*, using RGL3 Rabbit pAb (A22552) at 1:500 dilution.

Secondary antibody: HRP Goat Anti-Rabbit IgG (H+L) (AS014) at 1:10000 dilution.

Lysates/proteins: 25µg per lane.

Blocking buffer: 3% nonfat dry milk in TBST.

Detection: ECL Basic Kit (RM00020).

Exposure time: 90s.