

# APRR7 Rabbit pAb

Catalog No.: A22255

## Basic Information

### Observed MW

80kDa

### Calculated MW

### Category

Primary antibody

### Applications

ELISA, WB

### Cross-Reactivity

Arabidopsis thaliana

## Background

PRR7 and PRR9 are partially redundant essential components of a temperature-sensitive circadian system. CCA1 and LHY had a positive effect on PRR7 expression levels. Acts as transcriptional repressor of CCA1 and LHY.

## Recommended Dilutions

WB 1:500 - 1:1000

## Immunogen Information

### Gene ID

831793

### Swiss Prot

### Immunogen

Recombinant fusion protein containing a sequence corresponding to amino acids 236-339 of Arabidopsis thaliana APRR7 (NP\_568107.1).

### Synonyms

APRR7; F9G14.120; F9G14\_120; pseudo-response regulator 7

## Contact

 | 400-999-6126

 | [cn.market@abclonal.com.cn](mailto:cn.market@abclonal.com.cn)

 | [www.abclonal.com.cn](http://www.abclonal.com.cn)

## Product Information

### Source

Rabbit

### Isotype

IgG

### Purification

Affinity purification

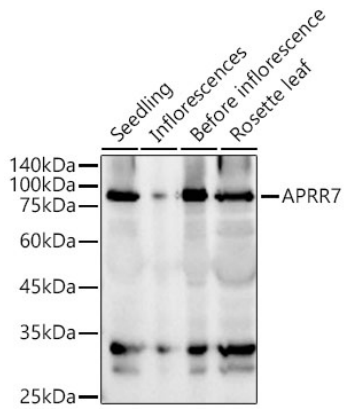
### Storage

Store at -20°C. Avoid freeze / thaw cycles.

Buffer: PBS with 0.05% proclin300, 50% glycerol, pH7.3.

## Validation Data

---



Western blot analysis of extracts of various tissues from *Arabidopsis thaliana*, using APRR7 Rabbit pAb (A22255) at 1:900 dilution.

Secondary antibody: HRP Goat Anti-Rabbit IgG (H+L) (AS014) at 1:10000 dilution.

Lysates/proteins: 25µg per lane.

Blocking buffer: 3% nonfat dry milk in TBST.

Detection: ECL Basic Kit (RM00020).

Exposure time: 10s.