

ABflo® 488 Rabbit anti-Human CD86 mAb

Catalog No.: A21940

Basic Information

Observed MW

Refer to figures

Calculated MW

38kDa

Category

Primary antibody

Applications

FC

Cross-Reactivity

Human

CloneNo number

ARC54012-ABf488

Conjugate

ABflo® 488. Ex:491nm. Em:516nm.

Recommended Dilutions

FC 5 µl per 10⁶ cells in
100 µl volume

Background

This gene encodes a type I membrane protein that is a member of the immunoglobulin superfamily. This protein is expressed by antigen-presenting cells, and it is the ligand for two proteins at the cell surface of T cells, CD28 antigen and cytotoxic T-lymphocyte-associated protein 4. Binding of this protein with CD28 antigen is a costimulatory signal for activation of the T-cell. Binding of this protein with cytotoxic T-lymphocyte-associated protein 4 negatively regulates T-cell activation and diminishes the immune response. Alternative splicing results in several transcript variants encoding different isoforms.

Immunogen Information

Gene ID

942

Swiss Prot

P42081

Immunogen

Recombinant fusion protein containing a sequence corresponding to amino acids 20-241 of human CD86 (NP_787058.5).

Synonyms

B70; B7-2; B7.2; LAB72; CD28LG2

Contact

☎ | 400-999-6126

✉ | cn.market@abclonal.com.cn

🌐 | www.abclonal.com.cn

Product Information

Source

Rabbit

Isotype

IgG

Purification

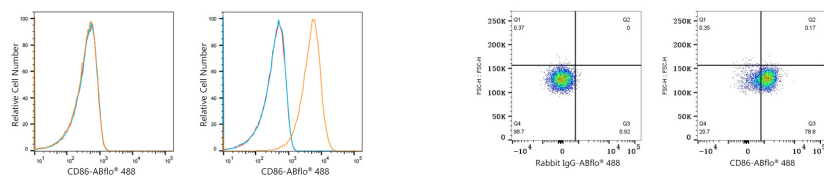
Affinity purification

Storage

Store at 2-8°C. Avoid freeze.

Buffer: PBS with 0.03% proclin300,0.2% BSA,pH7.3.

Validation Data



Flow cytometry: 1×10^6 K-562 cells (negative control, left) and Raji cells (right) were surface-stained with ABflo® 488 Rabbit anti-Human CD86 mAb (A21940, 5 μ l/Test, orange line) or ABflo® 488 Rabbit IgG isotype control (A22069, 5 μ l/Test, blue line). Non-fluorescently stained cells were used as blank control (red line).

Flow cytometry: 1×10^6 Human PBMC were surface-stained with ABflo® 488 Rabbit IgG isotype control (A22069, 2 μ g/mL, left) or ABflo® 488 Rabbit anti-Human CD86 mAb (A21940, 2 μ g/mL, right). Cells in the monocyte gate were used for analysis.