

BIN2 Rabbit pAb

Catalog No.: A21175

Basic Information

Observed MW

43kDa

Calculated MW

43kDa

Category

Primary antibody

Applications

ELISA, WB

Cross-Reactivity

Arabidopsis thaliana

Background

Encodes BIN2, a member of the ATSK (shaggy-like kinase) family. BIN2 functions in the cross-talk between auxin and brassinosteroid signaling pathways. BIN2 regulates root epidermal cell fate specification by phosphorylating EGL3 and TTG1. BIN2-mediated phosphorylation appears to promote BZR1 export from the nucleus.

Recommended Dilutions

WB 1:50 - 1:200

Immunogen Information

Gene ID

827605

Swiss Prot

Q39011

Immunogen

A synthetic peptide corresponding to a sequence within amino acids 281-380 of arabidopsis thaliana BIN2 (NP_193606.1).

Synonyms

ATSK21; BRASSINOSTEROID-INSENSITIVE 2; DWARF 12; DWF12; F28A21.120; F28A21_120; SHAGGY-LIKE KINASE 21; SK21; UCU1; ULTRACURVATA 1; BIN2

Contact

☎ | 400-999-6126

✉ | cn.market@abclonal.com.cn

🌐 | www.abclonal.com.cn

Product Information

Source

Rabbit

Isotype

IgG

Purification

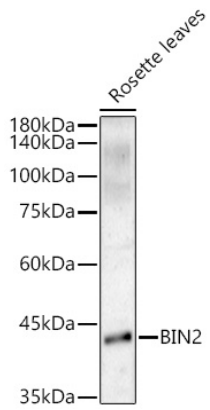
Affinity purification

Storage

Store at -20°C. Avoid freeze / thaw cycles.

Buffer: PBS with 0.05% proclin300, 50% glycerol, pH7.3.

Validation Data



Western blot analysis of lysates from Rosette leaves, using BIN2 Rabbit pAb (A21175) at 1:200 dilution.
Secondary antibody: HRP Goat Anti-Rabbit IgG (H+L) (AS014) at 1:10000 dilution.
Lysates/proteins: 25µg per lane.
Blocking buffer: 3% nonfat dry milk in TBST.
Detection: ECL Basic Kit (RM00020).
Exposure time: 180s.