

OsIRE1 Rabbit pAb

Catalog No.: A20585

Basic Information

Observed MW

90kDa

Calculated MW

99kDa

Category

Primary antibody

Applications

ELISA, WB

Cross-Reactivity

Oryza sativa

Background

Involved in endoplasmic reticulum (ER) stress response. Senses unfolded proteins in the lumen of the ER via its N-terminal domain which leads to enzyme auto-activation. The active endoribonuclease domain splices bZIP50 mRNA to generate a new C-terminus, converting it into a potent unfolded-protein response (UPR) transcriptional activator, which then induces transcription of UPR target genes, such as luminal-binding protein (BiP) chaperones.

Recommended Dilutions

WB 1:500 - 1:2000

Immunogen Information

Gene ID

4343198

Swiss Prot

Q7XIT1

Immunogen

Recombinant fusion protein containing a sequence corresponding to amino acids 436-650 of Oryza sativa OsIRE1 (Q7XIT1).

Synonyms

IRE1; OsIRE1; OsIre1p; OsJ_24190; OJ1103_E04.109

Contact

☎ | 400-999-6126

✉ | cn.market@abclonal.com.cn

🌐 | www.abclonal.com.cn

Product Information

Source

Rabbit

Isotype

IgG

Purification

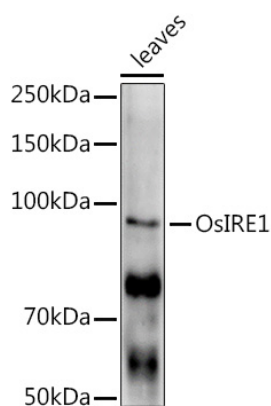
Affinity purification

Storage

Store at -20°C. Avoid freeze / thaw cycles.

Buffer: PBS with 0.02% sodium azide, 50% glycerol, pH7.3.

Validation Data



Western blot analysis of extracts of various tissues from the japonica rice (*Oryza sativa* L.) variety Zhonghua 11, using OsIRE1 Rabbit pAb (A20585) at 1:1000 dilution.
Secondary antibody: HRP Goat Anti-Rabbit IgG (H+L) (AS014) at 1:10000 dilution.
Lysates/proteins: 25µg per lane.
Blocking buffer: 3% nonfat dry milk in TBST.
Detection: ECL Enhanced Kit (RM00021).
Exposure time: 300s.