

# SQSTM1/p62 Rabbit mAb

Catalog No.: A19700

Recombinant

81 Publications

## Basic Information

### Observed MW

62kDa

### Calculated MW

48kDa

### Category

Primary antibody

### Applications

ELISA, WB, IHC-P, IF/ICC, IP

### Cross-Reactivity

Human, Mouse, Rat

### CloneNo number

ARC0180

## Background

This gene encodes a multifunctional protein that binds ubiquitin and regulates activation of the nuclear factor kappa-B (NF-κB) signaling pathway. The protein functions as a scaffolding/adaptor protein in concert with TNF receptor-associated factor 6 to mediate activation of NF-κB in response to upstream signals. Alternatively spliced transcript variants encoding either the same or different isoforms have been identified for this gene. Mutations in this gene result in sporadic and familial Paget disease of bone.

## Recommended Dilutions

WB	1:500 - 1:1000
IHC-P	1:500 - 1:1000
IF/ICC	1:50 - 1:200
IP	0.5μg-4μg antibody for 200μg-400μg extracts of whole cells

## Immunogen Information

### Gene ID

8878

### Swiss Prot

Q13501

### Immunogen

A synthetic peptide corresponding to a sequence within amino acids 341-440 of human SQSTM1/p62 (Q13501).

### Synonyms

p60; p62; A170; DMRV; OSIL; PDB3; ZIP3; p62B; NADGP; FTDALS3; SQSTM1/p62

## Contact

☎	400-999-6126
✉	cn.market@abclonal.com.cn
🌐	www.abclonal.com.cn

## Product Information

### Source

Rabbit

### Isotype

IgG

### Purification

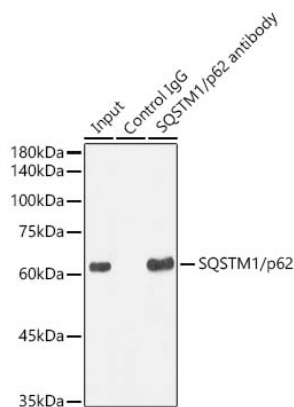
Affinity purification

### Storage

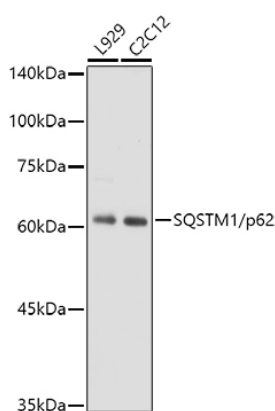
Store at -20°C. Avoid freeze / thaw cycles.

Buffer: PBS with 0.02% sodium azide, 0.05% BSA, 50% glycerol, pH7.3.

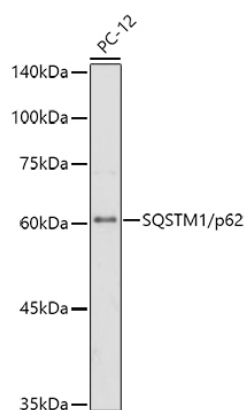
## Validation Data



Immunoprecipitation analysis of 300 µg extracts from HeLa cells using 3 µg SQSTM1/p62 Rabbit mAb (A19700). Western blot was performed from the immunoprecipitate using [KO Validated] SQSTM1/p62 Rabbit mAb (A19700) at a dilution of 1:1000.

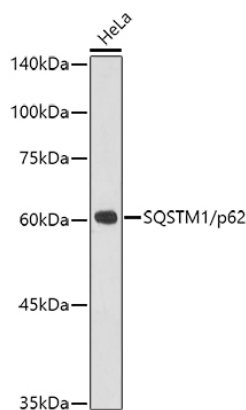


Western blot analysis of various lysates using SQSTM1/p62 Rabbit mAb (A19700) at 1:1000 dilution. Secondary antibody: HRP Goat Anti-Rabbit IgG (H+L) (AS014) at 1:10000 dilution. Lysates/proteins: 25µg per lane. Blocking buffer: 3% nonfat dry milk in TBST. Detection: ECL Basic Kit (RM00020). Exposure time: 1s.

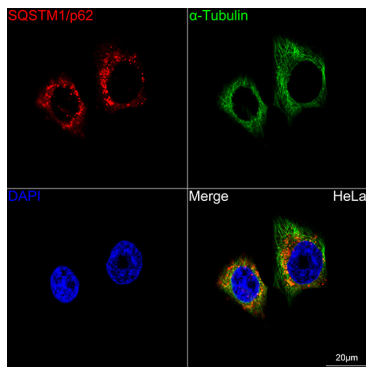


Western blot analysis of lysates from PC-12 cells, using SQSTM1/p62 Rabbit mAb (A19700) at 1:1000 dilution. Secondary antibody: HRP Goat Anti-Rabbit IgG (H+L) (AS014) at 1:10000 dilution. Lysates/proteins: 25µg per lane. Blocking buffer: 3% nonfat dry milk in TBST. Detection: ECL Basic Kit (RM00020). Exposure time: 30s.

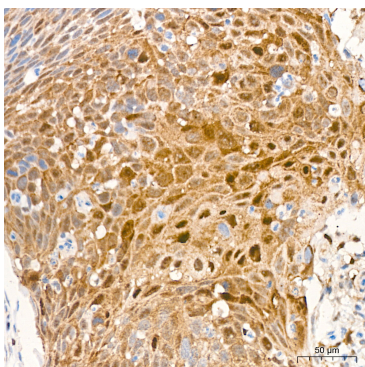
Validation Data



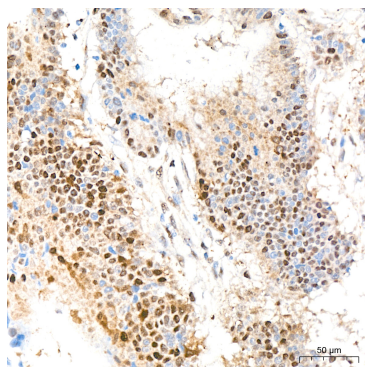
Western blot analysis of lysates from HeLa cells, using SQSTM1/p62 Rabbit mAb (A19700) at 1:1000 dilution.  
Secondary antibody: HRP Goat Anti-Rabbit IgG (H+L) (AS014) at 1:10000 dilution.  
Lysates/proteins: 25µg per lane.  
Blocking buffer: 3% nonfat dry milk in TBST.  
Detection: ECL Basic Kit (RM00020).  
Exposure time: 180s.



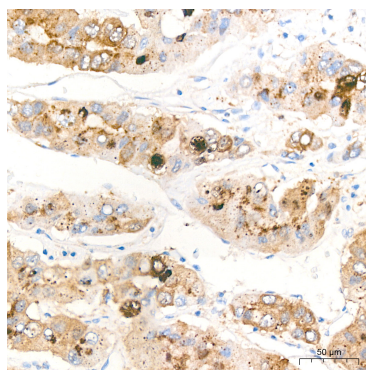
Confocal imaging of HeLa cells using SQSTM1/p62 Rabbit mAb (A19700, dilution 1:200) (Red). The cells were counterstained with Alpha-tubulin (ubiquitous) chain Rabbit mAb (AC049, dilution 1:100) (Green). DAPI was used for nuclear staining (Blue). Objective: 60x.



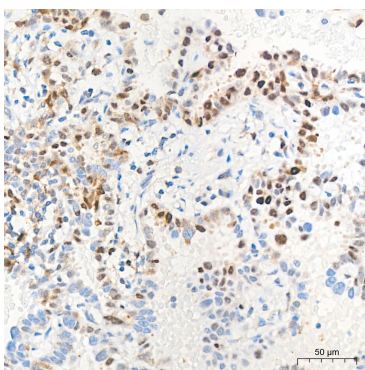
Immunohistochemistry analysis of SQSTM1/p62 in paraffin-embedded human cervix cancer tissue using SQSTM1/p62 Rabbit mAb (A19700) at a dilution of 1:1000 (40x lens). High pressure antigen retrieval was performed with 0.01 M citrate buffer (pH 6.0) prior to IHC staining.



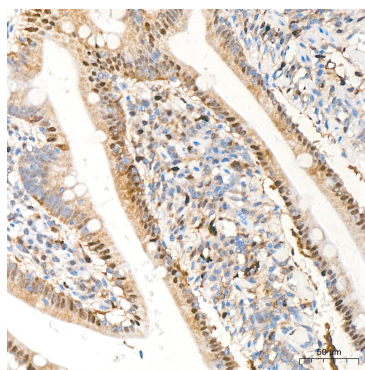
Immunohistochemistry analysis of SQSTM1/p62 in paraffin-embedded human colon carcinoma tissue using SQSTM1/p62 Rabbit mAb (A19700) at a dilution of 1:1000 (40x lens). High pressure antigen retrieval was performed with 0.01 M citrate buffer (pH 6.0) prior to IHC staining.



Immunohistochemistry analysis of SQSTM1/p62 in paraffin-embedded human liver cancer tissue using SQSTM1/p62 Rabbit mAb (A19700) at a dilution of 1:1000 (40x lens). High pressure antigen retrieval was performed with 0.01 M citrate buffer (pH 6.0) prior to IHC staining.



Immunohistochemistry analysis of SQSTM1/p62 in paraffin-embedded Human lung adenocarcinoma tissue using SQSTM1/p62 Rabbit mAb (A19700) at a dilution of 1:1000 (40x lens). High pressure antigen retrieval was performed with 0.01 M citrate buffer (pH 6.0) prior to IHC staining.



Immunohistochemistry analysis of SQSTM1/p62 in paraffin-embedded human small intestine tissue using SQSTM1/p62 Rabbit mAb (A19700) at a dilution of 1:1000 (40x lens). High pressure antigen retrieval was performed with 0.01 M citrate buffer (pH 6.0) prior to IHC staining.