

Pan Lactic acid-Lysine Rabbit pAb

Catalog No.: A18831

Basic Information

Observed MW

Calculated MW

Category

Primary antibody

Applications

ELISA, WB, IF/ICC

Cross-Reactivity

Human, Mouse, Rat

Background

Histone lysine lactation (Kla) is a newly discovered histone modification that regulates gene expression in macrophages. In M1 macrophages, lactic acid is derived from incompletely oxidized glucose and then produces lactyl-CoA, which is transferred via acetyltransferase p300 to the lysine tail of the histone. This modification is abundant in gene promoter regions that lack acetylation and are associated with gene expression activation.

Recommended Dilutions

WB 1:500 - 1:1000

IF/ICC 1:50 - 1:200

Immunogen Information

Gene ID

Swiss Prot

Immunogen

A synthetic peptide corresponding to a sequence containing Pan Lactic acid-Lysine.

Synonyms

Contact

☎ | 400-999-6126

✉ | cn.market@abclonal.com.cn

🌐 | www.abclonal.com.cn

Product Information

Source

Rabbit

Isotype

IgG

Purification

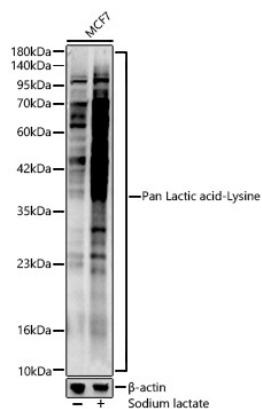
Affinity purification

Storage

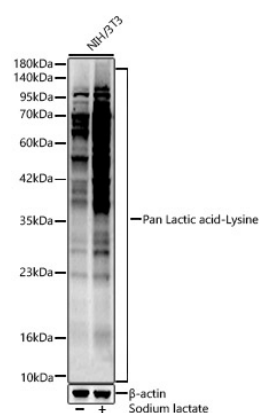
Store at -20°C. Avoid freeze / thaw cycles.

Buffer: PBS with 0.01% thimerosal, 50% glycerol, pH7.3.

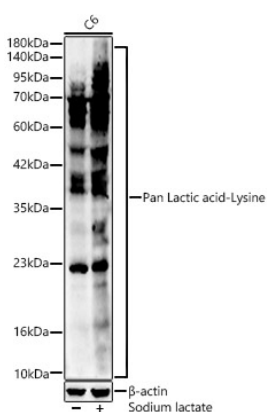
Validation Data



Western blot analysis of lysates from MCF7 cells, using Pan Lactic acid-Lysine Rabbit pAb (A18831) at 1:400 dilution. MCF7 cells were treated by Sodium lactate (100mM) for 24h. Secondary antibody: HRP Goat Anti-Rabbit IgG (H+L) (AS014) at 1:10000 dilution. Lysates/proteins: 25ug per lane. Blocking buffer: 3% nonfat dry milk in TBST. Detection: ECL Enhanced Kit (RM00021). Exposure time: 60s.

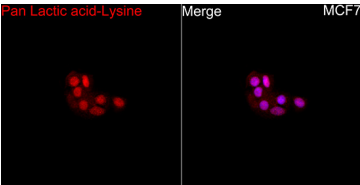


Western blot analysis of lysates from NIH/3T3 cells, using Pan Lactic acid-Lysine Rabbit pAb (A18831) at 1:400 dilution. NIH/3T3 cells were treated by Sodium lactate (100mM) for 24h. Secondary antibody: HRP Goat Anti-Rabbit IgG (H+L) (AS014) at 1:10000 dilution. Lysates/proteins: 25ug per lane. Blocking buffer: 3% nonfat dry milk in TBST. Detection: ECL Enhanced Kit (RM00021). Exposure time: 60s.



Western blot analysis of lysates from C6 cells, using Pan Lactic acid-Lysine Rabbit pAb (A18831) at 1:400 dilution. C6 cells were treated by Sodium lactate (100mM) for 24h. Secondary antibody: HRP Goat Anti-Rabbit IgG (H+L) (AS014) at 1:10000 dilution. Lysates/proteins: 25ug per lane. Blocking buffer: 3% nonfat dry milk in TBST. Detection: ECL Enhanced Kit (RM00021). Exposure time: 60s.

Validation Data



Immunofluorescence analysis of MCF7 cells using Pan Lactic acid-Lysine Rabbit pAb(A18831) at a dilution of 1:25 (40x lens). Secondary antibody: Cy3 Goat Anti-Rabbit IgG (H+L)(AS007) at 1:500 dilution. Blue: DAPI for nuclear staining.